



LALIQUE

King Street · 14 November 2017

CHRISTIE'S



LALIQUE

TUESDAY 14 NOVEMBER 2017

AUCTION

Tuesday 14 November 2017
at 2.00 pm Lots 1-101
8 King Street, St. James's,
London SW1Y 6QT

AUCTION CODE AND NUMBER

In sending absentee bids or making enquiries, this sale should be referred to as **LANGUEDOC-15786**

VIEWING

| | | |
|----------|-------------|-------------------|
| Saturday | 11 November | 12 noon - 5.00 pm |
| Sunday | 12 November | 12 noon - 5.00 pm |
| Monday | 13 November | 9.00 am - 4.30 pm |
| Tuesday | 14 November | 9.00 am - 12 noon |

AUCTIONEER

Jeremy Morrison

SERVICES

ABSENTEE AND TELEPHONE BIDS

Tel: +44 (0)20 7389 2658
Fax: +44 (0)20 7930 8870

AUCTION RESULTS

Tel: +44 (0)20 7839 9060
christies.com

CLIENT SERVICES

Tel: +44 (0)20 7839 9060
Fax: +44 (0)20 7389 2869
Email : info@christies.com

POST-SALE SERVICES

Kelsey Chang
Post-Sale Coordinator
Payment, Shipping, and Collection
Tel: +44 (0)20 7752 3200
Fax: +44 (0)20 7752 3300
Email: PostSaleUK@christies.com

CONDITIONS OF SALE

This auction is subject to Important Notices, Conditions of Sale and to Reserves

BUYING AT CHRISTIE'S

For an overview of the process, see the Buying at Christie's section.

[15]

christies.com

Front cover: Lot 98 (detail)
Opposite: Lot 101
Page 2: Lot 48 (detail)
Back cover: Lots 83, 84, 85
Page 86: Lot 22



Browse this auction and view real-time results on your iPhone, iPod Touch, iPad and Android

These auctions feature

CHRISTIE'S LIVE

Bid live in Christie's salerooms worldwide
register at christies.com

View catalogues and leave bids online
at christies.com

CHRISTIE'S



SPECIALISTS FOR THIS AUCTION

SPECIALISTS

Jeremy Morrison
European Head of Design
Tel: +44 (0)20 7752 3274

Simon Andrews
International Specialist
Tel: +44 (0)20 7752 3380

Joy McCall
Senior Specialist
Tel: +44 (0)20 7752 3237

SALE COORDINATOR

Nicholas Challinor-Halford
Tel: +44 (0)20 7752 3382

EMAIL

First initial followed by last name
@christies.com
(eg. Nicholas Challinor-Halford =
nchallinorhalford@christies.com.)
For general enquiries about this
auction, emails should be addressed
to the sale coordinator.

INTERNATIONAL DEPARTMENT DESIGN

INTERNATIONAL HEAD

Sonja Ganne
Tel: +33 (0)1 40 76 86 21

EUROPEAN HEAD

Jeremy Morrison
Tel: +44 (0)20 7752 3274

INTERNATIONAL SPECIALIST

Simon Andrews
Tel: +44 (0)20 7752 3380

REGIONAL MANAGING DIRECTOR

Nick Sims
Tel: +44 (0)20 7752 3003

HEAD OF SALE MANAGEMENT

Matthew Rigg
Tel: +44 (0)20 7389 2221

WORLDWIDE

LONDON

Jeremy Morrison
Simon Andrews
Joy McCall
Tel: +44 (0)20 7752 3382

NEW YORK

Carina Villinger
Beth Vilinsky
Vanessa Booher
Tel: +1 212 636 2240

PARIS

Sonja Ganne
Pauline De Smedt
Flavien Gaillard
Tel: +33 (0)1 40 76 83 90

INTERNATIONAL CALENDAR DESIGN

LONDON

18 OCTOBER
VILLA WUNDERKIND
SELECTED WORKS FROM
THE PRIVATE COLLECTION
OF WOLFGANG JOOP

18 OCTOBER
HISTORICAL DESIGN

18 OCTOBER
DESIGN

14 NOVEMBER
LALIQUE

PARIS

20 NOVEMBER
DESIGN VENTE DU SOIR

20 NOVEMBER
HOMAGE À JEAN ROYÈRE

NEW YORK

14 DECEMBER
DESIGN

Subject to change.

06/10/17

COPYRIGHT NOTICE

No part of this catalogue may be reproduced, stored in a retrieval system or transmitted by any form or by any means, electronic, mechanical, photocopying, recording or otherwise, without the prior written permission of Christie's.
© COPYRIGHT, CHRISTIE, MANSON & WOODS LTD. (2017)

1

A DAVOS VASE, NO. 1079

DESIGNED 1932

clear, frosted and blue stained

11½ in. (28.2 cm.) high

stencilled *R. LALIQUE FRANCE*

£1,500–2,500

\$2,000–3,300

€1,700–2,800



2

A SALMONIDES VASE, NO. 1015

DESIGNED 1928

clear, frosted and blue stained

12 in. (30.5 cm.) high

intaglio R. LALIQUE, engraved R. Lalique
France

£10,000-15,000

\$14,000-20,000

€12,000-17,000





3
AN AMIENS VASE, NO. 1023

DESIGNED 1929

clear, frosted and grey stained

7¼ in. (18.4 cm.) high

wheel-engraved *R. LALIQUE FRANCE*

£1,200–1,800

\$1,600–2,400

€1,400–2,000



*** 4**
A FAUNE VASE, NO. 1062

DESIGNED 1931

clear, frosted and black stained

12 in. (30.5 cm.) high

stencilled *R. LALIQUE FRANCE*

£2,500–3,500

\$3,300–4,600

€2,800–3,900

*5

A SERPENT VASE, NO. 896

DESIGNED 1924

clear, frosted and black stained

9¼ in. (24.7 cm.) high

intaglio R. *LALIQUE*

£15,000-25,000

\$20,000-33,000

€17,000-28,000





6

A TEHERAN VASE, NO. 955

DESIGNED 1926

clear, frosted and green stained

2¾ in. (7 cm.) high

intaglio *R. LALIQUE*

£1,000–1,500

\$1,400–2,000

€1,200–1,700



7

A RENNES VASE, NO. 10-875

DESIGNED 1933

clear, frosted and green stained

5 in. (12.7 cm.) high

stencilled *R. LALIQUE FRANCE*

£1,000–1,500

\$1,400–2,000

€1,200–1,700

8

A CHEVREUSE VASE, NO. 1081

DESIGNED 1930

clear, frosted, green and blue stained
6¼ in. (15.8 cm.) high
stencilled R. LALIQUE FRANCE

£1,000–1,500

\$1,400–2,000

€1,200–1,700



9

A MILAN VASE, NO. 1025

DESIGNED 1929

clear, frosted and green stained
11½ in. (29.2 cm.) high
engraved R. Laliq ue France No. 1025

£2,500–3,000

\$3,300–3,900

€2,800–3,300



***10**

A PALMES VASE, NO. 952

DESIGNED 1923

butterscotch

4¼ in. (11 cm.) high

engraved *R. Lalique France*

£1,000–1,500

\$1,400–2,000

€1,200–1,700



***11**

AN ESPALION VASE, NO. 996

DESIGNED 1927

electric blue

7 in. (17.8 cm.) high

engraved *R. Lalique France No. 996*

£3,000–5,000

\$4,000–6,500

€3,400–5,600



12

A PIERREFONDS VASE, NO. 990

DESIGNED 1926

clear and frosted

6½ in. (15.5 cm.) high; 13 in. (33 cm.) wide

wheel-engraved *R. LALIQUE*

£3,000–5,000

\$4,000–6,500

€3,400–5,600



*13

A PIERREFONDS VASE, NO. 990

DESIGNED 1926

amber

6½ in. (15.5 cm.) high; 13 in. (33 cm.) wide

wheel-engraved *R. LALIQUE FRANCE*

£5,000–8,000

\$6,600–10,000

€5,600–8,900





14
AN ANGES BOWL, NO. 410

DESIGNED 1930

cobalt blue

14½ in. (36.8 cm.) diameter

stencilled *R. LALIQUE FRANCE*

£4,000–6,000

\$5,300–7,800

€4,500–6,700



***15**

A BISKRA VASE, NO. 1078

DESIGNED 1932

sapphire blue and grey stained

12 in. (30.5 cm.) high

stencilled *R. LALIQUE FRANCE*

£3,000–5,000

\$4,000–6,500

€3,400–5,600

16

A MILAN VASE, NO. 1025

DESIGNED 1929

sapphire

11¼ in. (25 cm.) high

stencilled *R. LALIQUE*

£8,000-12,000

\$11,000-16,000

€9,000-13,000



17

A SOPHORA VASE, NO. 977

DESIGNED 1926

smoky and white stained

10 $\frac{5}{8}$ in. (27 cm.) high

intaglio *R. LALIQUE*

£3,000-5,000

\$4,000-6,500

€3,400-5,600



*18

A PENTHIEVRE VASE, NO. 1011

DESIGNED 1928

deep amber and white stained

10½ in. (26.7 cm.) high

engraved *R. Lalique France*

£10,000-15,000

\$14,000-20,000

€12,000-17,000



19

A MURES VASE, NO. 1058

DESIGNED 1930

opalescent and blue stained

7¾ in. (19.6 cm.) high

stencilled *R. LALIQUE FRANCE*

£2,000-2,500

\$2,700-3,300

€2,300-2,800



* 20

**A MONTMORENCY VASE,
NO. 1050**

DESIGNED 1930

opalescent and blue stained

8 in. (20.3 cm.) high

stencilled *R. LALIQUE FRANCE*

£3,000–5,000

\$4,000–6,500

€3,400–5,600



21

A BISKRA VASE, NO. 1078

DESIGNED 1932

double cased opalescent and blue
stained

11¼ in. (29.9 cm.) high

stencilled *R. LALIQUE FRANCE*

£2,500–3,500

\$3,300–4,600

€2,800–3,900



22

A MARGUERITES VASE, NO. 922

DESIGNED 1923

cased opalescent and blue stained

8¼ in. (21 cm.) high

engraved *R. Lalique France No. 922*

£1,800-2,200

\$2,400-2,900

€2,100-2,500



* 23

A DANAIDES VASE, NO. 972

DESIGNED 1926

opalescent

7½ in. (18 cm.) high

stencilled *R. LALIQUE FRANCE*

£3,500–4,500

\$4,600–5,900

€4,000–5,000



* 24

A BACCHANTES VASE, NO. 997

DESIGNED 1927

opalescent and blue stained

9½ in. (24.2 cm.) high

wheel-engraved *R. LALIQUE FRANCE*

£15,000–25,000

\$20,000–33,000

€17,000–28,000





25

A BACCHUS VASE, NO. 10-922

DESIGNED 1938

clear, frosted and blue stained

6 $\frac{7}{8}$ in. (17.4 cm.) high

stencilled R. LALIQUE FRANCE

£2,500–3,500

\$3,300–4,600

€2,800–3,900



26

**A GOBELET SIX FIGURINES
VASE, NO. 903**

DESIGNED 1912

clear, frosted and blue stained

7 $\frac{1}{2}$ in. (19.1 cm.) high

engraved R. Lalique

£1,500–2,000

\$2,000–2,600

€1,700–2,200

27

**A PAIR OF DAHLIAS VASES, NO.
938**

DESIGNED 1923

clear, frosted, blue stained and black
enamelled

5¼ in. (13 cm.) high

one intaglio moulded *R. LALIQUE*,
one engraved *R. Lalique France No. 938*

(2)

£3,000-5,000

\$4,000-6,500

€3,400-5,600





28

AN EPICEA VASE, NO. 921

DESIGNED 1923

clear, frosted and green stained

9¼ in. (23.5 cm.) high

moulded *R. LALIQUE*, engraved *France*

£1,500-2,000

\$2,000-2,600

€1,700-2,200



29

A VICHY VASE, NO. 10-909

DESIGNED 1937

clear and frosted

6¾ in. (17.2 cm.) high

stencilled *R. LALIQUE FRANCE*

£1,000-1,500

\$1,400-2,000

€1,200-1,700

30
A MONTMORENCY VASE, NO.
1050

DESIGNED 1930

clear, frosted and blue stained

8½ in. (20.7 cm.) high

wheel-engraved *R. LALIQUE FRANCE*

£1,800-2,200

\$2,400-2,900

€2,100-2,500



31

**A DEUX DANSEUSES CARAFE,
NO. 3153**

DESIGNED 1912

clear, frosted and sepia stained

13¼ in. (33.6 cm.) high

later wheel-engraved *R. LALIQUE*

£1,500–2,500

\$2,000–3,300

€1,700–2,800



32

A SATYRE CARAFE, NO. 3167

DESIGNED 1923

clear, frosted and sepia stained

10 in. (25.3 cm.) high

engraved *R. Lalique pour Cusenier* (2)

£1,000–1,500

\$1,400–2,000

€1,200–1,700



33

**A CLOS-SAINTE-ODILE ICE
BUCKET, A**

DESIGNED 1922

clear, frosted and sepia stained,
moulded *LE VIN DU CLOS ST ODILE*
REJOUIT LES COEURS PIERRE
WEISSENBERGER OBERNAI
9¼ in. (23.5 cm.) high
moulded *R. LALIQUE*, stencilled *R.*
LALIQUE FRANCE

£2,000–3,000

\$2,700–3,900

€2,300–3,300



* 34

**A BAHIA LEMONADE SET,
NOS 3179, 3413 AND 3683**

DESIGNED 1931

yellow, comprising jug, six glasses
and tray

jug - 9 $\frac{1}{8}$ in. (23.2 cm.) high

glasses - 4 $\frac{7}{8}$ in. (12.5 cm.) high

tray - 16 $\frac{3}{4}$ in. (42.5 cm.) diameter

stencilled *R. LALIQUE* (8)

£3,000-5,000

\$4,000-6,500

€3,400-5,600



*** 35**

A DORDOGNE VASE, NO. 1001

DESIGNED 1927

clear and frosted

8 in. (20.3 cm.) high

intaglio *R. LALIQUE*, engraved *R. Lalique*

France No. 1001

£2,000–3,000

\$2,700–3,900

€2,300–3,300



36

A HIRONDELLES FRAME, NO.

257

DESIGNED 1926

clear and frosted, white metal back and stand

5½ in. (13 cm.) high

wheel-engraved *R. LALIQUE*

£2,500–3,000

\$3,300–3,900

€2,800–3,300

37

SIX MOINEAUX

PAPERWEIGHTS, NOS 1149, 1150, 1151 AND 1167

DESIGNED 1929 AND 1930

two **Fier**, two **Hardi**, a **Timide** and

Moqueur, clear and frosted

3½ in. (9 cm.) and smaller

some stencilled *R. LALIQUE FRANCE*,

others engraved *R. Lalique France* (6)

£1,000–1,500

\$1,400–2,000

€1,200–1,700



38

A MESANGES JARDINIÈRE, NO.

3462

DESIGNED 1927

clear and frosted
20¾ in. (52.7 cm.) wide
wheel-engraved *R. LALIQUE FRANCE*,
engraved No. 3462

£1,500–2,500

\$2,000–3,300

€1,700–2,800



39

A SAINT HUBERT JARDINIÈRE,

NO. 3461

DESIGNED 1927

clear and frosted
19 in. (48.2 cm.) wide
wheel-engraved *R. LALIQUE FRANCE*

£1,500–2,500

\$2,000–3,300

€1,700–2,800



40

A COQ DE JUNGLE, NO. 1124

DESIGNED 1936

clear and frosted

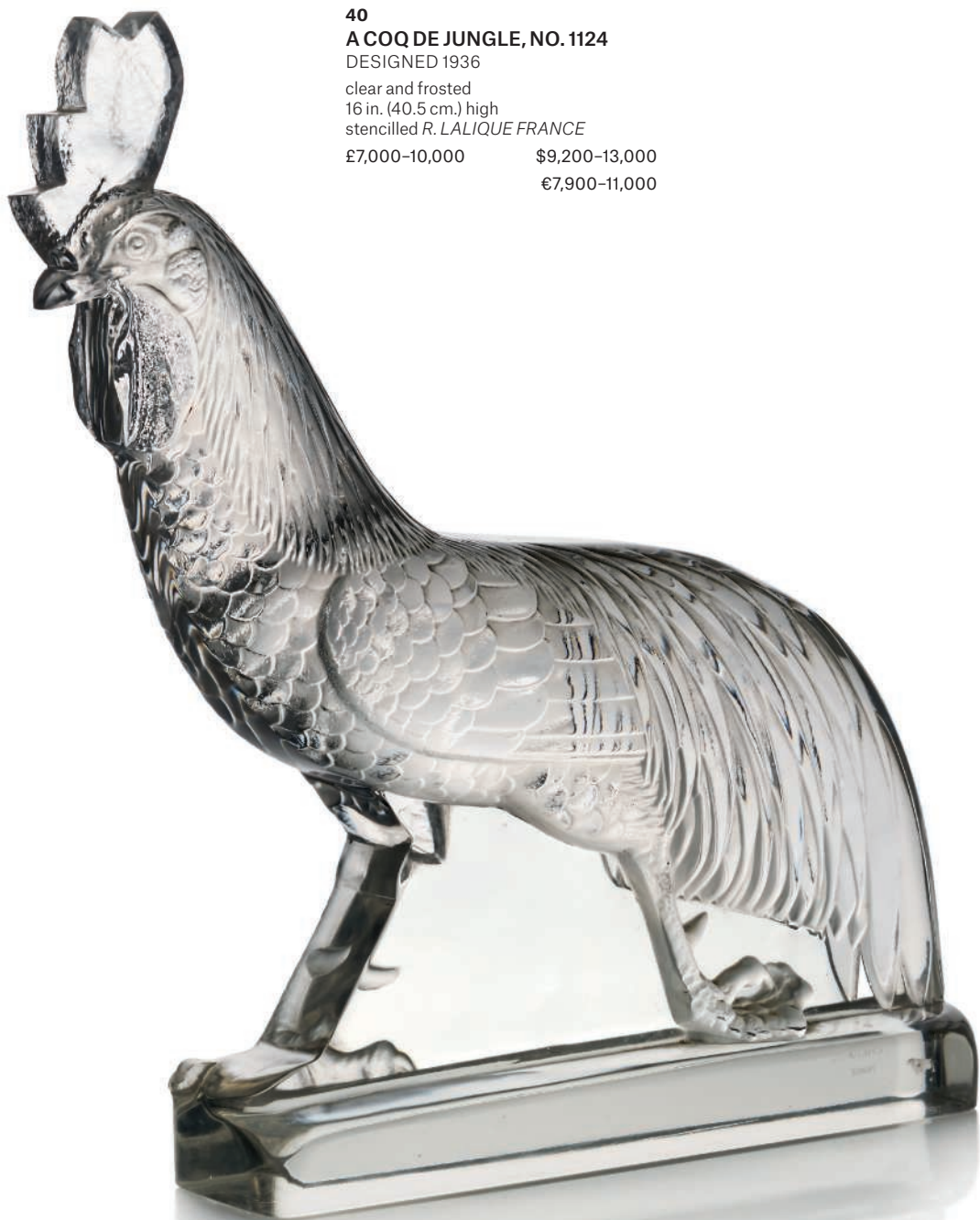
16 in. (40.5 cm.) high

stencilled *R. LALIQUE FRANCE*

£7,000–10,000

\$9,200–13,000

€7,900–11,000



41

A PAN SCENT BOTTLE, NO. 504

DESIGNED 1920

clear, frosted and blue stained

4 $\frac{7}{8}$ in. (12.5 cm.) high

moulded *R. LALIQUE*

£1,000-1,500

\$1,400-2,000

€1,200-1,700



42

**A SIRENES BRULE-PARFUMS,
NO. 2651**

DESIGNED 1920

clear, frosted and blue stained

6 $\frac{3}{4}$ in. (17.1 cm.) high

moulded *R. LALIQUE*

(2)

£1,000-1,500

\$1,400-2,000

€1,200-1,700



43

**AN AMPHITRITE SCENT
BOTTLE, NO. 514**

DESIGNED 1920

clear, frosted and blue stained
3 $\frac{3}{8}$ in. (9.8 cm.) high
moulded *LALIQUE*, engraved *R. Lalique*
France No. 514

£1,500-2,500

\$2,000-3,300

€1,700-2,800



44

**A GABILIA 2 - LA VIOLETTE
SCENT BOTTLE**

DESIGNED 1925

clear, frosted and blue enamelled
3 $\frac{3}{8}$ in. (8.5 cm.) high
intaglio *R. LALIQUE FRANCE*

£2,000-3,000

\$2,700-3,900

€2,300-3,300



45

**ANOVIATT - 1,
LE PARFUM DES ANGES**

DESIGNED 1926

clear, frosted and sepia stained

3¼ in. (8.3 cm.) high

moulded *R. LALIQUE PARIS FRANCE*,

intaglio *LE PARFUM DES ANGES*

£1,000-1,500

\$1,400-2,000

€1,200-1,700



46

**AD'ORSAY - 4
AMBRE SCENT BOTTLE**

DESIGNED 1912

black and white stained

5½ in. (13 cm.) high

moulded *LALIQUE AMBRE D'ORSAY*

£1,000-1,500

\$1,400-2,000

€1,200-1,700





* 47

A WALKING STICK

DESIGNED CIRCA 1900

silvered metal, snake-wood
handle 4½ in. (10.5 cm.) long; stick 34½ in. (87.5 cm.) high
stamped *Lalique*, wood carved CW

£7,000–9,000

\$9,200–12,000

€7,900–10,000

PROVENANCE:

Christie's South Kensington, *Lalique*, 23 May 2007, lot 56.

LITERATURE:

S. Barten, *Rene Lalique Schmuck und Objets d'Art 1890-1910*, Munich, 1977, p. 523, ref. 1610 variation example illustrated.

This cane featured on *The Antiques Roadshow* at Arundel Castle and was shown on BBC1 on 17th December 2006.



*** 48**

**SUZANNE LALIQUE (1892-1989)
A PORTRAIT OF RENE LALIQUE**

1931

oil on canvas

28¼ x 34½ in. (71.6 x 87.6 cm.) framed

signed *Suzanne Lalique 1931*

£10,000–15,000

\$14,000–20,000

€12,000–17,000

PROVENANCE:

Commissioned from Suzanne Lalique;

Miss Jessie Boot

The Honourable Marjorie Holman;

Lord Trent;

Sotheby's New York, 11 June 1993, lot 381.

LITERATURE:

P. Bayer, M. Waller, *The Art of René*

Lalique, London, 1988, p. 6, work

illustrated;

F. Marcilhac, *René Lalique 1960-1945*

Mâitre-Verrier, 2011, Paris, 2011, p. 196,

work illustrated.

Jessie Boot and Lord Trent commissioned

Lalique to renovate St Matthew's

Church, Jersey in the early 1930s shortly

after this portrait was painted.

Suzanne Lalique
1931.





49

A DINARD BOX, NO. 78

DESIGNED 1927

clear, frosted and sepia stained
3¼ in. (8.2 cm.) high; 4¾ in. (12 cm.) long
stencilled *R. LALIQUE FRANCE* (2)

£1,200–1,800

\$1,600–2,400

€1,400–2,000



50

A POUSSINS BOX, NO. 85

DESIGNED 1929

clear, frosted and blue stained
2¾ in. (7.5 cm.) high; 4½ in. (11.4 cm.) long
moulded *R. LALIQUE FRANCE* (2)

£1,500–2,500

\$2,000–3,300

€1,700–2,800

51
A BOMBAY BOX, NO. 93

DESIGNED 1933

clear, frosted and sepia stained

5 in. (12.7 cm.) high

base stencilled *R. LALIQUE* (2)

£2,500–3,000

\$3,300–3,900

€2,800–3,300





52

A TOKIO BOX, NO. 50

DESIGNED 1921

butterscotch

6½ in. (16.5 cm.) diameter

moulded *LALIQUE*

(2)

£1,000-1,500

\$1,400-2,000

€1,200-1,700



***53**
A DEUX SIRENES BOX, NO. 43
DESIGNED 1921

opalescent
10 in. (25.5 cm.) diameter
moulded R. LALIQUE, engraved France (2)

£3,000–5,000

\$4,000–6,500

€3,400–5,600



54
A PAIR OF RINCEAUX
PLAFONNIERS, NO. 2468

DESIGNED 1926

clear and frosted

14¾ in. (37.5 cm.) diameter

wheel-engraved *R. LALIQUE FRANCE* (2)

£5,000–7,000

\$6,600–9,100

€5,600–7,800

* 55

**A MADAGASCAR PLAFONNIER,
NO. 2481**

DESIGNED 1928

clear, frosted and sepia stained

13 in. (33 cm.) diameter

moulded R. LALIQUE FRANCE

£5,000-7,000

\$6,600-9,100

€5,600-7,800





*** 56**

A LAUSANNE PLAFONNIER, NO. 2479

DESIGNED 1927

amber

15 in. (38.1 cm.) diameter

moulded *R. LALIQUÉ*

£2,000–3,000

\$2,700–3,900

€2,300–3,300

57

A PAIR OF FONTAINES POISSONS PANELS, U

DESIGNED 1935,
EXECUTED POST-WAR

clear and frosted, white metal mounts

12 $\frac{7}{8}$ in. (32.8 cm.) sq. (2)

£4,000–6,000

\$5,300–7,800

€4,500–6,700





58
MARC LALIQUE (1900-1977)
A SEVILLE WALL APPLIQUE
 DESIGNED 1947

clear and frosted, white metal mount
 15 in. (38 cm.) high

£1,800-2,200

\$2,400-2,900

€2,100-2,500

59
A CHAMPS ELYSEES
CHANDELIER, NO. 10112
 DESIGNED POST WAR

clear and frosted, gilt-metal fitments
 23 $\frac{3}{8}$ in. (60 cm.) high;
 20 $\frac{7}{8}$ in. (53 cm.) diameter

£2,000-3,000

\$2,700-3,900

€2,300-3,300



60

**A COQ ET RAISINS VASE,
NO. 1034**

DESIGNED 1928

clear, frosted and blue stained
6½ in. (15.5 cm.) high
stencilled *R. LALIQUE FRANCE*

£1,000-1,500

\$1,400-2,000

€1,200-1,700



61

**A COQ ET PLUMES VASE,
NO. 1033**

DESIGNED 1928

clear, frosted and blue stained
6½ in. (15.5 cm.) high
stencilled *R. LALIQUE FRANCE*

£1,000-1,500

\$1,400-2,000

€1,200-1,700



62

AN ARCHERS VASE, NO. 893

DESIGNED 1921

clear, frosted and blue stained

11 in. (28 cm.) high

engraved *R. Lalique France*

£3,000-5,000

\$4,000-6,500

€3,400-5,600





63
A THIBET VASE, NO. 1083

DESIGNED 1931

clear, frosted and blue stained
8 in. (20.3 cm.) high
stencilled *R. LALIQUE FRANCE*

£1,500–2,500

\$2,000–3,300

€1,700–2,800



64
A ST EMILION VASE, NO. 10-939

DESIGNED 1942

clear and frosted
10½ in. (25.7 cm.) high
stencilled *R. LALIQUE*

£1,000–1,500

\$1,400–2,000

€1,200–1,700

65

AN ANTILOPES VASE, NO. 875

DESIGNED 1925

clear, frosted and black enamelled

10 $\frac{1}{8}$ in. (27.5 cm.) high

stencilled *R. LALIQUE FRANCE*

£2,500-3,500

\$3,300-4,600

€2,800-3,900



* 66

A SAUTERELLES VASE, NO. 888

DESIGNED 1912

clear, frosted, blue and green stained

10 $\frac{5}{8}$ in. (27 cm.) high

engraved *R. Lalique*

£5,000-7,000

\$6,600-9,100

€5,600-7,800



67

A PERRUCHES VASE, NO. 876

DESIGNED 1919

clear, frosted, blue and green stained

10% in. (26.4 cm.) high

intaglio R. *LALIQUE*, moulded R.

LALIQUE

£3,500–4,500

\$4,600–5,900

€4,000–5,000





68
A FAUCON CARMASCOT,
NO. 1124

DESIGNED 1925

clear and frosted
6¼ in. (15.9 cm.) high
moulded *R. LALIQUE*, wheel-engraved
FRANCE

£1,800–2,200

\$2,400–2,900

€2,100–2,500

69
A TETE DE COQ MASCOT,
NO. 1137

DESIGNED 1928

clear and frosted, black base
8 in. (20.3 cm.) high
intaglio *LALIQUE FRANCE*, base
stencilled *R. LALIQUE FRANCE*

£1,000–1,500

\$1,400–2,000

€1,200–1,700



70

**A RARE TETE D'AIGLE CAR
MASCOT, NO. 1138**

DESIGNED 1928

deep brown amber
4¼ in. (11 cm.) high
moulded *R. LALIQUE*

£8,000-12,000

\$11,000-16,000

€9,000-13,000



71

A COQ NAIN CAR MASCOT, NO.

1135

DESIGNED 1928

topaz

7 $\frac{7}{8}$ in. (20 cm.) high

moulded *R. LALIQUE FRANCE*

£2,000-3,000

\$2,700-3,900

€2,300-3,300



72

**A PAIR OF TETE DE COQ
BOOKENDS, NO. 1137**

DESIGNED 1928

clear and frosted, black base

8¼ in. (21 cm.) high

intaglio *LALIQUE FRANCE*, base

stencilled *R. LALIQUE FRANCE*

£2,000–3,000

\$2,700–3,900

€2,300–3,300



73

**A ST CHRISTOPHE CAR
MASCOT, NO. 1142**

DESIGNED 1929

clear and frosted

4¾ in. (12 cm.) high

intaglio *R. LALIQUE FRANCE*

£1,000-1,500

\$1,400-2,000

€1,200-1,700



74

**A LONGCHAMPS CAR MASCOT,
NO. 1152B**

DESIGNED 1929

clear and frosted, black base, chromed
metal mount

5 in. (12.7 cm.) high

moulded *R. LALIQUE FRANCE*

£15,000-25,000

\$20,000-33,000

€17,000-28,000



75

**A SANGLIER CAR MASCOT,
NO. 1157**

DESIGNED 1929

smoky

2¾ in. (7 cm.) high

moulded *R. LALIQUE*, stencilled *R.*

LALIQUE FRANCE

£1,000-1,500

\$1,400-2,000

€1,200-1,700



76

**A RARE SANGLIER CAR
MASCOT, NO. 1157**

DESIGNED 1929

amber

2¾ in. (6.5 cm.) high

engraved *R. Lalique France*

£5,000-8,000

\$6,600-10,000

€5,600-8,900



77
AN EPSOM CAR MASCOT, NO.
1153

DESIGNED 1929

clear and frosted, black base, chromed
metal mount

5¼ in. (13.3 cm.) high

£30,000–40,000 \$40,000–52,000

€34,000–45,000





CECILIA

78

**A PERCHE CAR MASCOT,
NO. 1158**

DESIGNED 1929

opalescent

6¼ in. (15.9 cm.) long

moulded *R. LALIQUE*, wheel-engraved *R.*

LALIQUE FRANCE, engraved No. 1158

£1,200–1,800

\$1,600–2,400

€1,400–2,000



79

**A PERCHE CAR MASCOT,
NO. 1158**

DESIGNED 1929

butterscotch

6¼ in. (15.9 cm.) long

moulded *R. LALIQUE*

£3,500-4,500

\$4,600-5,900

€4,000-5,000



80

A CEYLAN VASE, NO. 905

DESIGNED 1924

opalescent

9½ in. (24 cm.) high

wheel-engraved R. *LALIQUE FRANCE*

£3,000-5,000

\$4,000-6,500

€3,400-5,600



81

AN ARCHERS VASE, NO. 893

DESIGNED 1921

cased opalescent

11¼ in. (28.5 cm.) high

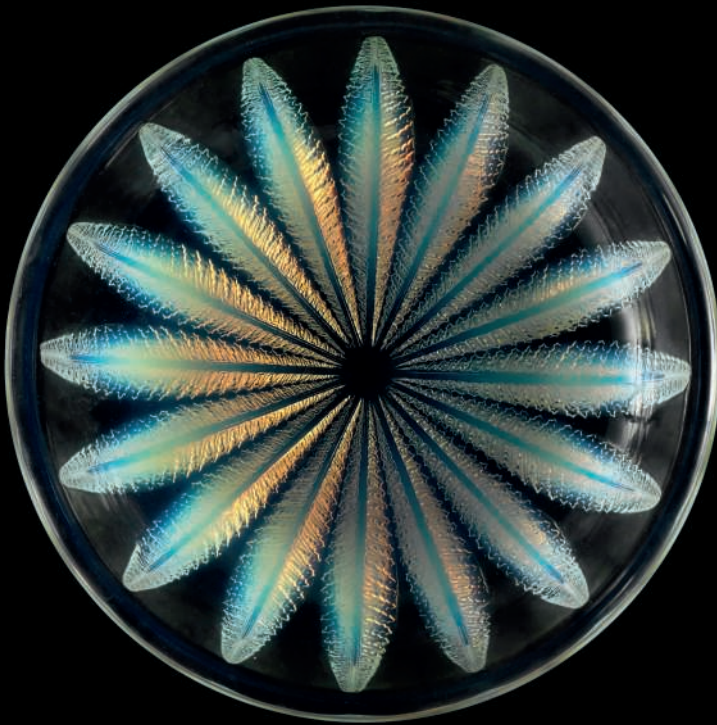
intaglio R. *LALIQUE*

£5,000–8,000

\$6,600–10,000

€5,600–8,900





82

**A CHATAIGNIER BOWL,
NO. 10-388**

DESIGNED 1933

opalescent

13 $\frac{3}{8}$ in. (35.3 cm.) diameter

stencilled *R. LALIQUE FRANCE*

£1,000–1,500

\$1,400–2,000

€1,200–1,700



83

A SPIRALES VASE, NO. 1060

DESIGNED 1930

opalescent and grey stained

6 $\frac{3}{8}$ in. (16.9 cm.) high

stencilled *R. LALIQUE FRANCE*

£1,500–2,500

\$2,000–3,300

€1,700–2,800

84

**A GUIRLANDES VASE,
NO. 10-887**

DESIGNED 1935

opalescent

8 $\frac{3}{8}$ in. (21.2 cm.) high

stencilled *R. LALIQUE FRANCE*

£1,800–2,200

\$2,400–2,900

€2,100–2,500



85

A MEANDRES VASE, NO. 10-876

DESIGNED 1932

opalescent

6 $\frac{5}{8}$ in. (16.8 cm.) high

£1,200–1,800

\$1,600–2,400

€1,400–2,000





86

**A MUGUET SHALLOW BOWL,
NO. 416**

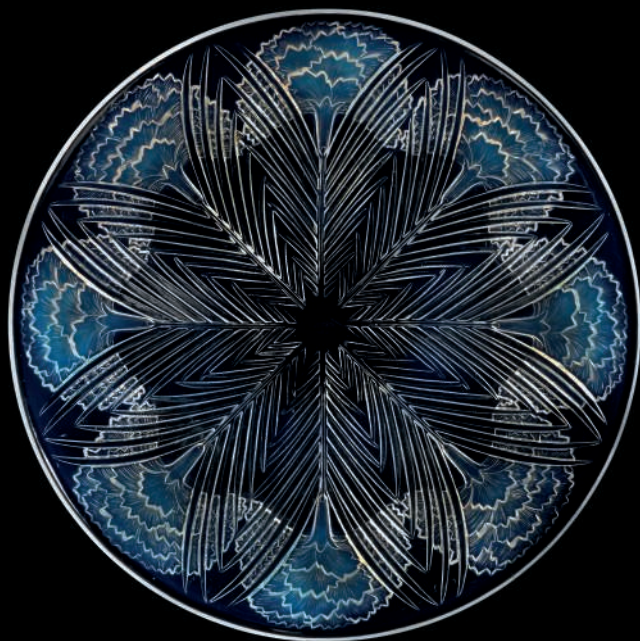
DESIGNED 1931

opalescent
12¼ in. (31 cm.) diameter
stencilled *R. LALIQUE FRANCE*

£1,500–2,500

\$2,000–3,300

€1,700–2,800



87

**AN OEILLETTS SHALLOW BOWL,
NO. 422**

DESIGNED 1932

opalescent
14 in. (35.6 cm.) diameter
stencilled *R. LALIQUE FRANCE*

£1,000–1,500

\$1,400–2,000

€1,200–1,700

88

A VIOLETTES VASE, NO. 930

DESIGNED 1921

opalescent and blue stained

6 $\frac{1}{8}$ in. (15.5 cm.) high

wheel-engraved *R. LALIQUE FRANCE*

£1,800–2,200

\$2,400–2,900

€2,100–2,500



89

AN AVALLON VASE, NO. 986

DESIGNED 1927

opalescent and grey stained

5 $\frac{3}{4}$ in. (14.6 cm.) high

wheel-engraved *R. LALIQUE FRANCE*,

engraved *No. 986*

£1,500–2,500

\$2,000–3,300

€1,700–2,800





90
AN ONDINES PLATE, NO. 3003
DESIGNED 1921

opalescent; together with an **Ondines bowl, No. 380**, designed 1921,
opalescent
plate - 10 $\frac{7}{8}$ in. (27.5 cm.) diameter
bowl - 8 $\frac{3}{4}$ in. (21 cm.) diameter
each moulded *R. LALIQUE*, the bowl with
additional later engraved marks (2)

£1,800-2,200

\$2,400-2,900

€2,100-2,500



91

A MARTIGUES BOWL, NO. 377

DESIGNED 1920

opalescent

14 $\frac{1}{4}$ in. (36.5 cm.) diameter

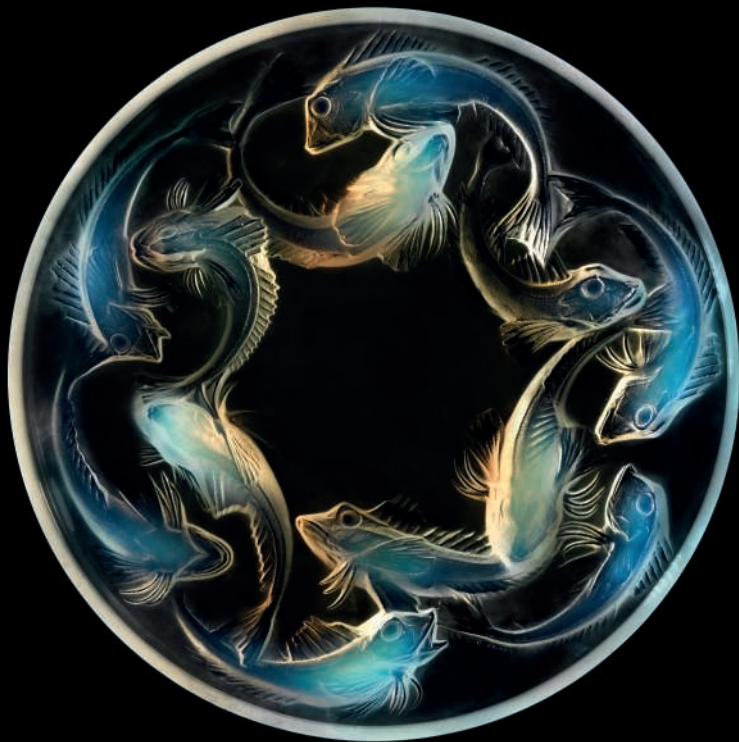
moulded R. LALIQUE, wheel-engraved

FRANCE

£2,000–3,000

\$2,700–3,900

€2,300–3,300



92

**A CALYPSO SHALLOW BOWL,
NO. 413**

DESIGNED 1930,

EXECUTED POST-WAR

opalescent

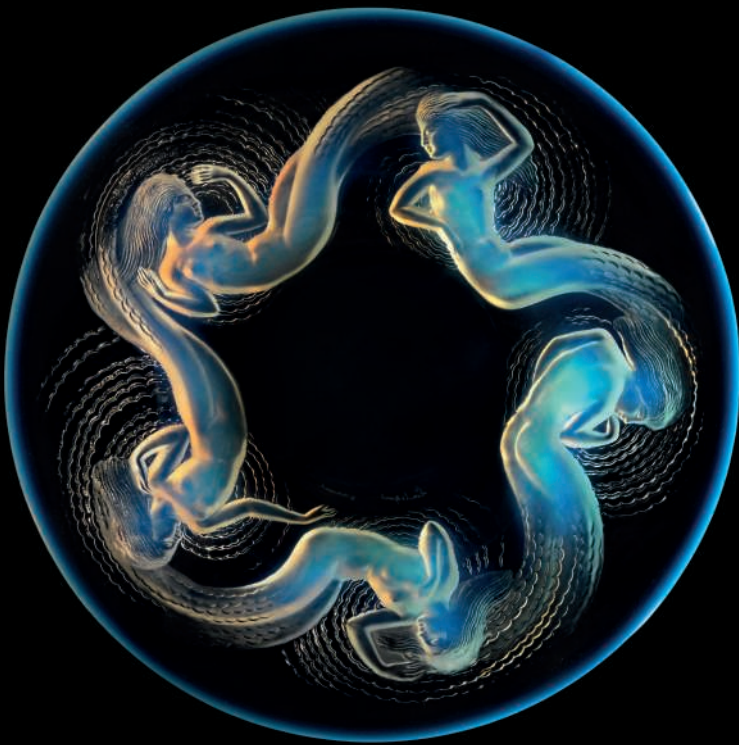
14 $\frac{1}{4}$ in. (36.2 cm.) diameter

engraved Lalique France

£2,500–3,500

\$3,300–4,600

€2,800–3,900



93

A RONCE VASE, NO. 946

DESIGNED 1921

cased butterscotch and red stained

9 in. (22.8 cm.) high

moulded *R. LALIQUE*

£4,000-6,000

\$5,300-7,800

€4,500-6,700



94

A FORMOSE VASE, NO. 934

DESIGNED 1924

cherry red and white stained

6½ in. (16.5 cm.) high

stencilled *R. LALIQUE FRANCE*

£5,000–8,000

\$6,600–10,000

€5,600–8,900



*95

A SOPHORA VASE, NO. 977

DESIGNED 1926

grey and white stained

10 in. (25.5 cm.) high

stencilled *R. LALIQUE*

£3,500-4,500

\$4,600-5,900

€4,000-5,000



*96

A SOPHORA VASE, NO. 977

DESIGNED 1926

clear, frosted and grey stained

10 in. (25.5 cm.) high

engraved *R. Lalique France*

£3,000-5,000

\$4,000-6,500

€3,400-5,600



97

A DOMREMY VASE, NO. 979

DESIGNED 1926

green and white stained

8¼ in. (21 cm.) high

engraved *R. Lalique France No. 979*

£3,000-5,000

\$4,000-6,500

€3,400-5,600



* 98

A LANGUEDOC VASE, NO. 1021

DESIGNED 1929

deep amber

9¼ in. (23.5 cm.) high

stencilled *R. LALIQUE*, later engraved *R.*

Lalique France

£10,000–15,000

\$14,000–20,000

€12,000–17,000



99

AN ARCHERS VASE, NO. 893

DESIGNED 1921

grey

10½ in. (26.7 cm.) high

intaglio *R. LALIQUE*

£4,000–6,000

\$5,300–7,800

€4,500–6,700

***100**

**A RARE PALESTRE VASE,
NO. 1012**

DESIGNED 1928

clear, frosted and grey stained

16¼ in. (41.2 cm.) high

wheel-engraved *R. LALIQUE*

£25,000–35,000

\$33,000–46,000

€28,000–39,000





101

**A CIRE PERDUE RONCE
EPINEUSE ET MURES, CP 117**

DESIGNED 1 APRIL 1919

7½ in. (18 cm.) high

engraved *Lalique*, signed in cast 8-19

£25,000–35,000

\$33,000–46,000

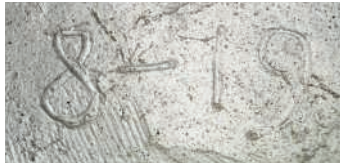
€28,000–39,000

PROVENANCE:

Alfred Chtapowski (1874-1940), a Polish
ambassador to France;

Thence by descent and acquired from
the estate.

The location of this vase was previously
unknown, designed in 1919, and listed
in F. Marilhac, *René Lalique 1860-1945
Maître-Verrier*, Paris, 2011, p. 999, with a
design drawing. Executed using the cire
perdue or lost wax technique, this is a
unique piece.





INDEX

A

Ambre, 46
Amiens, 3
Amphitrite, 43
Anges, 14
Antilopes, 65
Archers, 62, 81, 99
Avallon, 89

B

Bacchantes, 24
Bacchus, 25
Bahia, 34
Biskra, 15, 21
Bombay, 51

C

Calypso, 92
Ceylan, 80
Champs-Élysées, 59
Châtaignier, 82
Chevreuse, 8
Clos Sainte Odile, 33
Coq de Jungle, 40
Coq et Plumes, 61
Coq et Raisins, 60
Coq Nain, 71

D

Dahlias, 27
Daniades, 13
Davos, 1
Deux Danseuses, 31
Deux Sirènes, 53
Dinard, 49
Domrèmy, 97
Dordogne, 35

E

Epicéa, 28
Epsom, 77
Espalion, 11

F

Faucon, 68
Faune, 4
Fontaines Poissons, 57
Formose, 94

G

Gobelet Six Figurines, 26
Guirlandes, 84

H

Hirondelles, 36

L

La Violette, 44
Languedoc, 98
Lausanne, 56
Le Parfum des Anges, 45
Longchamps B, 74

M

Madagascar, 55
Marguerites, 22
Martigues, 91
Méandres, 85
Mésanges, 38
Milan, 9, 16
Moineaux, 37
Montmorency, 20, 30
Muguet, 86
Mûres, 19

O

Oeillets, 87
Ondines, 90

P

Palestre, 100
Palmes, 10
Pan, 41
Penthièvre, 18
Perche, 78, 79
Perruches, 67
Pierrefonds, 12, 13
Poussins, 50

R

Rennes, 7
Rinceaux, 54
Ronce, 93
Ronce Epineuse et Mûres, 101

S

Saint Hubert, 39
Salmonides, 2
Sanglier, 75, 76
Satyre, 32
Sauterelles, 66
Serpent, 5
Séville, 58
Sirènes, 42
Sophora, 17, 95, 96
Spirales, 83
St Christophe, 73
St Emilion, 64

T

Téhéran, 6
Tête d'Aigle, 70
Tête de Coq, 69, 72
Thibet, 63
Tokio, 52

V

Vichy, 29
Violettes, 88

W

Walking stick, 47

CONDITIONS OF SALE • BUYING AT CHRISTIE'S

CONDITIONS OF SALE

These Conditions of Sale and the Important Notices and Explanation of Cataloguing Practice set out the terms on which we offer the **lots** listed in this catalogue for sale. By registering to bid and/or by bidding at auction you agree to these terms, so you should read them carefully before doing so. You will find a glossary at the end explaining the meaning of the words and expressions coloured in bold.

Unless we own a **lot** (A symbol, Christie's acts as agent for the seller.

A BEFORE THE SALE

1 DESCRIPTION OF LOTS

(a) Certain words used in the catalogue description have special meanings. You can find details of these on the page headed 'Important Notices and Explanation of Cataloguing Practice' which forms part of these terms. You can find a key to the Symbols found next to certain catalogue entries under the section of the catalogue called 'Symbols Used in this Catalogue for sale'.
(b) Our description of any **lot** in the catalogue, any **condition report** and any other statement made by us (whether orally or in writing) about any lot, including about its nature or **condition**, artist, period, materials, approximate dimensions or **provenance** are our opinion and we should be relied upon as a statement of fact. We do not carry out in-depth research of the sort carried out by professional historians and scholars. All dimensions and weights are approximate only.

2 OUR RESPONSIBILITY FOR OUR DESCRIPTION OF LOTS

We do not provide any guarantee in relation to the nature of a **lot** apart from our **authenticity warranty** contained in paragraph E2 and to the extent provided in paragraph I below.

3 CONDITION

(a) The **condition** of **lots** sold in our auctions can vary widely due to factors such as age, previous damage, restoration, repair and wear and tear. Their nature means that they will rarely be in perfect **condition**. **Lots** are sold 'as is', in the **condition** they are in at the time of the sale, without any representation or warranty or assumption of liability of any kind as to condition by Christie's or by the seller.

(b) Any reference to **condition** in a catalogue entry or in a **condition report** will not amount to a full description of **condition**, and images may not show a **lot** clearly. Colours and shades may look different in print or on screen to how they look on physical inspection. **Condition reports** may be available to help you evaluate the **condition** of a **lot**. **Condition reports** are provided free of charge as a convenience to our clients and are for guidance only. They offer our opinion but they may not refer to all faults, inherent defects, restoration, alteration or adaptation because our staff are not professional restorers or conservators. For that reason they are not an alternative to examining a **lot** in person or taking your own professional advice. It is your responsibility to ensure that you have requested, received and considered any **condition report**.

4 VIEWING LOTS PRE-AUCTION

(a) If you are planning to bid on a **lot**, you should inspect it personally or through a knowledgeable representative before you make a bid to make sure that you accept the description and its **condition**. We recommend you get your own advice from a restorer or other professional adviser.

(b) Pre-auction viewings are open to the public free of charge. Our specialists may be available to answer questions at pre-auction viewings or by appointment.

5 ESTIMATES

Estimates are based on the **condition**, rarity, quality and **provenance** of the **lots** and on prices recently paid at auction for similar property. **Estimates** can change. Neither you, nor anyone else, may rely on any **estimates** as a prediction or guarantee of the actual selling price of a **lot** or its value for any other purpose. **Estimates** do not include the **buyer's premium** or any applicable taxes.

6 WITHDRAWAL

Christie's may, at its option, withdraw any **lot** at any time prior to or during the sale of a **lot**. Christie's has no liability to you for any decision to withdraw.

7 JEWELLERY

(a) Coloured gemstones (such as rubies, sapphires and emeralds) may have been treated to improve their look, through methods such as heating and oiling. These methods are accepted by the international jewellery trade but may make the gemstone less strong and/or require special care over time.

(b) All types of gemstones may have been improved by some method. You may request a gemmological report for any item which does not have a report. If the request is made to us at least three weeks before the date of the auction and you pay the fee for the report.

(c) We do not obtain a gemmological report for every gemstone sold in our auctions. Where we do get gemmological reports from internationally recognised gemmological laboratories, such reports will be described in the catalogue. Reports from American gemmological laboratories will describe any improvement or treatment to the gemstone. Reports from European gemmological laboratories will describe any improvement or treatment only if we request that they do so, but will confirm when no improvement or treatment has been made. Because of differences in approach and technology, laboratories may not agree whether a particular gemstone has been treated, the amount of treatment or whether treatment is permanent. The gemmological laboratories will only report on the improvements or treatments known to the laboratories at the date of the report.

(d) For jewellery sales, **estimates** are based on the information in any gemmological report or, if no report is available, assume that the gemstones may have been treated or enhanced.

8 WATCHES & CLOCKS

(a) Almost all clocks and watches are repaired in their lifetime and may include parts which are not original. We do not give a **warranty** that any individual component part of any watch or clock is **authentic**. Watchbands described as 'associated' are not part of the original watch and may not be **authentic**. Clocks may be sold without pendulums, weights or keys.

(b) As collectors' watches and clocks often have very fine and complex mechanisms, a general service, change of battery or further repair work may be necessary, for which you are responsible. We do not give a **warranty** that any watch or clock is in good working order. Certificates are not available unless described in the catalogue.

(c) Most watches have been opened to find out the type and quality of movement. For that reason, watches with water resistant cases may not be waterproof and we recommend you have them checked by a competent watchmaker before use. Important information about the sale, transport and shipping of watches and watchbands can be found in paragraph H(2)(g).

B REGISTERING TO BID

1 NEW BIDDERS

(a) If this is your first time bidding at Christie's or you are a returning bidder who has not bought anything from any of our salerooms within the last two years you must register at least 48 hours before an auction to give us enough time to process and approve your registration. We may, at our option, decline to permit you to register as a bidder. You will be asked for the following:

(i) for individuals: Photo identification (driving licence, national identity card or passport) and, if not shown on the ID document, proof of your current address (for example, a current utility bill or bank statement).

(ii) for corporate clients: Your Certificate of Incorporation or equivalent document(s) showing your name and registered address together with documentary proof of directors and beneficial owners; and

(iii) for trusts, partnerships, offshore companies and other business structures, please contact us in advance to discuss our requirements.

(b) We may also ask you to give us a financial reference and/or a deposit as a condition of allowing you to bid. For help, please contact our Credit Department on +44 (0)20 7839 9060.

2 RETURNING BIDDERS

We may at our option ask you for current identification as described in paragraph B(1)(a) above, a financial reference or a deposit as a condition of allowing you to bid. If you have not bought anything from any of our salerooms in the last two years or if you want to spend more than on previous occasions, please contact our Credit Department on +44 (0)20 7839 9060.

3 IF YOU FAIL TO PROVIDE THE RIGHT DOCUMENTS

If in our opinion you do not satisfy our bid identification and registration procedures including but not limited to completing any anti-money laundering and/or anti-terrorism financing checks we may require to our satisfaction, we may refuse to register you to bid, and if you make a successful bid, we may cancel the contract for sale between you and the seller.

4 BIDDING ON BEHALF OF ANOTHER PERSON

(a) **As authorised bidder.** If you are bidding on behalf of another person, that person will need to complete the registration requirements above before you can bid, and supply a signed letter authorising you to bid for him/her.

(b) **As agent for an undisclosed principal:** If you are bidding as an agent for an undisclosed principal (the ultimate buyer(s)), you accept personal liability to pay the **purchase price** and all other sums due. Further, you warrant that:

(i) you have conducted appropriate customer due diligence on the ultimate buyer(s) of the lot(s) in accordance with all applicable anti-money laundering and sanctions laws, consent to us relying on this due diligence, and you will retain for a period of not less than five years the documentation and records evidencing the due diligence;

(ii) you will make such documentation and records evidencing your due diligence promptly available for immediate inspection by an independent third-party auditor upon our written request to do so. We will not disclose such documentation and records to any third-parties unless (1) it is already in the public domain, (2) it is required to be disclosed by law, or (3) it is in accordance with anti-money laundering laws;

(iii) the arrangements between you and the ultimate buyer(s) are not designed to facilitate tax crimes;

(iv) you do not know, and have no reason to suspect, that the funds used for settlement are connected with, the proceeds of any criminal activity or that the ultimate buyer(s) are under investigation, charged with or convicted of money laundering, terrorist activities or other money laundering predicate crimes.

A bidder accepts personal liability to pay the **purchase price** and all other sums due unless it has been agreed in writing with Christie's before commencement of the auction that the bidder is acting as an agent on behalf of a named third party acceptable to Christie's and that Christie's will only seek payment from the named third party.

5 BIDDING IN PERSON

If you wish to bid in the saleroom you must register for a numbered bidding paddle at least 30 minutes before the auction. You may register online at www.christies.com or in person. For help, please contact the Credit Department on +44 (0)20 7839 9060.

6 BIDDING SERVICES

The bidding services described below are a free service offered as a convenience to our clients and Christie's is not responsible for any error (human or otherwise), omission or breakdown in providing these services.

(a) Phone Bids

Your request for this service must be made no later than 24 hours prior to the auction. We will accept bids by telephone for lots only if our staff are available to take the bids. If you need to bid in a language other than in English, you must arrange this well before the auction. We may record telephone bids. By bidding on the telephone, you are agreeing to us recording your conversations. You also agree that your telephone bids are governed by these Conditions of Sale.

(b) Internet Bids on Christie's Live™

For certain auctions we will accept bids over the Internet. Please visit www.christies.com/livebidding and click on the 'Bid Live' icon to see details of how to watch, hear and bid at the auction from your computer. As well as these Conditions of Sale, internet bids are governed by the Christie's LIVE™ terms of use which are available on www.christies.com.

(c) Written Bids

You can find a Written Bid Form at the back of our catalogues, at any of our offices or by choosing the sale and viewing the **lots** online at www.christies.com. We must receive your completed Written Bid Form at least 24 hours before the auction. Bids must be placed in the currency of the saleroom. The auctioneer will take reasonable steps to carry out written bids at the lowest possible price, taking into account the **reserve**. If you make a written bid on a **lot** which does not have a **reserve** and there is no higher bid than yours, we will bid on your behalf at around 50% of the **low estimate** or, if lower, the amount of your bid. If we receive written bids on a **lot** for identical amounts, and at the auction these are the highest bids on the **lot**, we will sell the **lot** to the bidder whose written bid we received first.

C AT THE SALE

1 WHO CAN ENTER THE AUCTION

We may, at our option, refuse admission to our premises or decline to permit participation in any auction to or reject any bid.

2 RESERVE

Unless otherwise indicated, all lots are subject to a **reserve**. We identify **lots** that are offered without **reserve** with the symbol * next to the lot number. The reserve cannot be more than the **lot's low estimate**.

3 AUCTIONEER'S DISCRETION

The auctioneer can at his sole option:

- refuse any bid;
- move the bidding backwards or forwards in any way he or she may decide, or change the order of the **lots**;
- withdraw any **lot**;
- divide any **lot** or combine any two or more **lots**;
- reopen or continue the bidding even after the hammer has fallen; and
- in the case of error or dispute and whether during or after the auction, to continue the bidding, determine the successful bidder, cancel the sale of the **lot**, or reoffer and resell any **lot**. If any dispute relating to bidding arises during or after the auction, the auctioneer's decision in exercise of this option is final.

4 BIDDING

The auctioneer accepts bids from:

- bidders in the saleroom;
- telephone bidders, and internet bidders through 'Christie's LIVE™' (as shown above in Section B6); and
- written bids (also known as absentee bids or commission bids) left with us by a bidder before the auction.

5 BIDDING ON BEHALF OF THE SELLER

The auctioneer may, at his or her sole option, bid on behalf of the seller up to but not including the amount of the **reserve** either by making consecutive bids or by making bids in response to other bidders. The auctioneer will not identify these as bids made on behalf of the seller and will not make any bid on behalf of the seller at or above the **reserve**. If **lots** are offered without **reserve**, the auctioneer will generally decide to open the bidding at 50% of the **low estimate** for the **lot**. If no bid is made at that level, the auctioneer may decide to go backwards at his or her sole option until a bid is made, and then continue up from that amount. In the event that there are no bids on a **lot**, the auctioneer may deem such **lot** unsold.

6 BID INCREMENTS

Bidding generally starts below the **low estimate** and increases in steps (bid increments). The auctioneer will decide at his or her sole option where the bidding should start and the bid increments. The usual bid increments are shown for guidance only on the Written Bid Form at the back of this catalogue.

7 CURRENCY CONVERTER

The saleroom video screens (and Christie's LIVE™) may show bids in some other major currencies as well as sterling. Any conversion is for guidance only and we cannot be bound by any rate of exchange used. Christie's is not responsible for any error (human or otherwise), omission or breakdown in providing these services.

8 SUCCESSFUL BIDS

Unless the auctioneer decides to use his or her discretion as set out in paragraph C3 above, when the auctioneer's hammer strikes, we have accepted the last bid. This means a contract for sale has been formed between the seller and the successful bidder. We will issue an invoice only to the registered bidder who made the successful bid. While we send out invoices by post and/or email after the auction, we do not accept responsibility for telling you whether or not your bid was successful. If you have bid by written bid, you should contact us by telephone or in person as soon as possible after the auction to get details of the outcome of your bid to avoid having to pay unnecessary storage charges.

9 LOCAL BIDDING LAWS

You agree that when bidding in any of our sales that you will strictly comply with all local laws and regulations in force at the time of the sale for the relevant sale site.

D THE BUYER'S PREMIUM, TAXES AND ARTIST'S RESALE ROYALTY

1 THE BUYER'S PREMIUM

In addition to the **hammer price**, the successful bidder agrees to pay us a **buyer's premium** on the **hammer price** of each lot sold. On all lots we charge 25% of the **hammer price** up to and including £175,000, 20% on that part of the **hammer price** over £175,000 and up to and including £3,000,000, and 12.5% of that part of the **hammer price** above £3,000,000.

2 TAXES

The successful bidder is responsible for any applicable tax including any VAT, sales or compensating use tax or equivalent tax wherever such taxes may arise on the **hammer price** and the **buyer's premium**. It is the buyer's responsibility to ascertain and pay all taxes due. You can find details of how VAT and VAT reclaimers are dealt with on the section of the catalogue headed VAT Symbols and Explanation'. VAT charges and refunds depend on the particular circumstances of the buyer so this section, which is not exhaustive, should be used only as a general guide. In all circumstances EU and UK law takes precedence. If you have any questions about VAT, please contact Christie's VAT Department on +44 (0)20 7389 9076 (email: VAT_London@christies.com; fax: +44 (0)20 3219 6076). Christie's recommends you obtain your own independent tax advice. For lots Christie's ships to the United States, a state sales or use tax may be due on the **hammer price**, **buyer's premium** and shipping costs on the lot, regardless of the nationality or citizenship of the purchaser. Christie's is currently required to collect sales tax for lots it ships to the state of New York. The applicable sales tax rate will be determined based upon the state, county, or locale to which the lot will be shipped. Successful bidders claiming an exemption from sales tax must provide appropriate documentation to Christie's prior to the release of the lot. For shipments to those states for which Christie's is required to collect sales tax, a successful bidder may be required to remit use tax to that state's taxing authorities. Christie's recommends you obtain your own independent tax advice with further questions.

3 ARTIST'S RESALE ROYALTY

In certain countries, local laws entitle the artist or the artist's estate to a royalty known as 'artist's resale right' when any lot created by the artist is sold. We identify these lots with the symbol  next to the lot number. If these laws apply to a lot, you must pay us an extra amount equal to the royalty. We will pay the royalty to the appropriate authority on the seller's behalf.

The artist's resale royalty applies if the **hammer price** of the lot is 1,000 euro or more. The total royalty for any lot cannot be more than 12,500 euro. We work out the amount owed as follows: **Royalty for the portion of the hammer price**

| |
|---|
| (in euros) |
| 4% up to 50,000 |
| 3% between 50,000.01 and 200,000 |
| 1% between 200,000.01 and 350,000 |
| 0.50% between 350,000.01 and 500,000 |
| over 500,000, the lower of 0.25% and 12,500 euro. |

We will work out the artist's resale royalty using the euro sterling rate of exchange of the European Central Bank on the day of the auction.

E WARRANTIES

1 SELLER'S WARRANTIES

For each lot, the seller gives a warranty that the seller: (a) is the owner of the lot; the joint owner of the lot acting with the permission of the other co-owners or; if the seller is not the owner or a joint owner of the lot, has the permission of the owner to sell the lot, or the right to do so in law; and (b) has the right to transfer ownership of the lot to the buyer without any restrictions or claims by anyone else. If either of the above warranties are incorrect, the seller shall not have to pay more than the **purchase price** (as defined in paragraph F1(a) below) paid by you to us. The seller will not be responsible to you for any reason for loss of profits or business, expected savings, loss of opportunity or interest, costs, damages, other damages or expenses. The seller gives no warranty in relation to any lot other than as set out above and, as far as the seller is allowed by law, all warranties from the seller to you, and all other obligations upon the seller which may be added to this agreement by law, are excluded.

2 OUR AUTHENTICITY WARRANTY

We warrant, subject to the terms below, that the lots in our sales are authentic (our 'authenticity warranty'). If, within five years of the date of the auction, you satisfy us that your lot is not authentic, subject to the terms below, we will refund the **purchase price** paid by you. The meaning of 'authentic' can be found in the glossary at the end of these Conditions of Sale. The terms of the **authenticity warranty** are as follows:

(a) It will be honoured for a period of five years from the date of the auction. After such time, we will not be obligated to honour the **authenticity warranty**.

(b) It is given only for information shown in **UPPERCASE type** in the first line of the catalogue description (the 'Heading'). It does not apply to any information other than in the **Heading** even if shown in **UPPERCASE type**.

(c) The **authenticity warranty** does not apply to any **Heading** or part of a **Heading** which is qualified or limited by a clarification in a lot's catalogue description or by the use in a **Heading** of one of the terms listed in the section titled **Qualified Headings** on the page of the catalogue headed 'Important Notices and Explanation of Cataloguing Practices'. For example, use of the term 'ATTRIBUTED TO...', in a **Heading** means that the lot is Christie's opinion probably a work by the named artist but no warranty is provided that the lot is the work of the named artist. Please read the full list of **Qualified Headings** and a lot's full catalogue description before bidding.

(d) The **authenticity warranty** applies to the **Heading** as amended by any **Saleroom Notice**.

(e) The **authenticity warranty** does not apply where scholarship has developed since the auction leading to a change in generally accepted opinion. Further, it does not apply if the **Heading** either matched the generally accepted opinion of experts at the date of the sale or drew attention to any conflict of opinion.

(f) The **authenticity warranty** does not apply if the lot can only be shown to be **authentic** by a scientific process which, on the date we published the catalogue, was not available or generally accepted for use, or which was unreasonably expensive or impractical, or which was likely to have damaged the lot.

(g) The benefit of the **authenticity warranty** is only available to the original buyer shown on the invoice for the lot issued at the time of the sale and only if the original buyer has owned the lot continuously between the date of the auction and the date of claim: (i) by not being transferred to anyone else; and

(h) In order to claim under the **authenticity warranty** you must:

- give us written details, including full supporting evidence, of any claim within five years of the date of the auction;
- at Christie's option, we may require you to provide the written opinions of two recognised experts in the field of the lot mutually agreed by you and us in advance confirming that the lot is not **authentic**. If we have any doubts, we reserve the right to obtain additional opinions at our expense; and
- return the lot at its own expense to the saleroom from which you bought it in the condition it was in at the time of sale.

(i) Your only right under this **authenticity warranty** is to cancel the sale and receive a refund of the **purchase price** paid by you to us. We will not, in any circumstances, be required to pay you more than the **purchase price** nor will we be liable for any loss of profits or business, loss of opportunity or value, expected savings or interest, costs, damages, other damages or expenses.

(j) **Books.** Where the lot is a book, we give an additional **warranty** that we will not, within five years of the date of the sale that if on collation any lot is defective in text or illustration, we will refund your **purchase price**, subject to the following terms:

- This additional **warranty** does not apply to:
 - the absence of blanks, half titles, tissue guards or advertisements, damage in respect of bindings, stains, spotting, marginal tears or other defects not affecting completeness of the text or illustration;
 - drawings, autographs, letters or manuscripts, signed photographs, music, atlases, maps or periodicals;
 - books not identified by title;
 - lots sold without a printed **estimate**;
 - books which are described in the catalogue as sold not subject to sale;
 - defects stated in any **condition** report or announced at the time of sale.
- To make a claim under this paragraph you must give written details of the defect and return the lot to the sale room at which you bought it in the same **condition** as at the time of sale, within 14 days of the date of the sale.
- South East Asian Modern and Contemporary Art and Chinese Calligraphy and Painting.** In these categories, the **authenticity warranty** does not apply because current scholarship does not permit the making of definitive statements. Christie's does, however, agree to cancel a sale in either of these two categories of art where it has been proven the lot is a forgery. Christie's will refund to the original buyer the **purchase price** in accordance with the terms of Christie's authenticity warranty, provided that the original buyer notifies us with full supporting evidence documenting the forgery claim within twelve (12) months of the date of the auction. Such evidence must be satisfactory to us that the lot is a forgery in accordance with paragraph E2(h)(ii) above and the lot must be returned to us in accordance with E2(h)(iii) above. Paragraphs E2(b), (c), (d), (e), (f) and (g) and (i) also apply to a claim under these categories.

(k) **South East Asian Modern and Contemporary Art and Chinese Calligraphy and Painting.** In these categories, the **authenticity warranty** does not apply because current scholarship does not permit the making of definitive statements. Christie's does, however, agree to cancel a sale in either of these two categories of art where it has been proven the lot is a forgery. Christie's will refund to the original buyer the **purchase price** in accordance with the terms of Christie's authenticity warranty, provided that the original buyer notifies us with full supporting evidence documenting the forgery claim within twelve (12) months of the date of the auction. Such evidence must be satisfactory to us that the lot is a forgery in accordance with paragraph E2(h)(ii) above and the lot must be returned to us in accordance with E2(h)(iii) above. Paragraphs E2(b), (c), (d), (e), (f) and (g) and (i) also apply to a claim under these categories.

F PAYMENT

1 HOW TO PAY

(a) Immediately following the auction, you must pay the **purchase price** being:

- the **hammer price**; and
- the **buyer's premium**; and
- any duties, goods, sales, use, compensating or service tax or VAT.

(b) We will only accept payment from the registered bidder. Once issued, we cannot change the buyer's name on an invoice or re-issue the invoice in a different name. You must pay immediately even if you want to export the lot and you need an export licence.

(c) You must pay for lots bought at Christie's in the United Kingdom in the currency stated on the invoice in one of the following ways:

(i) Wire transfer

You must make payments to:

Lloyds Bank Plc, City Office, PO Box 217, 72 Lombard Street, London EC3P 3BT. Account number: 0017270, sort code: 30-30-02 Swift code: LOYDGB2LCT. IBAN (international bank account number): GGB1 LOYD 3000 0200 1727 10.

(ii) Credit Card.

We accept most major credit cards subject to certain conditions. You may make payment via credit card in person. You may also make a cardholder not present (CNP) payment by calling Christie's Post-Sale Services Department on +44 (0)20 7352 3200 or for some sales, by logging into myChristie's account by going to: www.christies.com/mychristies. Details of the conditions and restrictions applicable to credit card payments are available from our Post-Sale Services Department or as set out in paragraph (e) below.

If you pay for your purchase using a credit card issued outside the region of the sale, depending on the type of credit card and account you hold, the payment may incur a cross-border transaction fee. If you think this may apply to you, please check with your credit card issuer before making the payment. We reserve the right to charge you any transaction or processing fees which we incur when processing your payment.

Please note that for sales that permit online payment, certain transactions will be ineligible for credit card payment.

(iii) Cash

We accept cash subject to a maximum of £5,000 per buyer per year at our Cashier's Department only (subject to conditions).

(iv) Banker's draft

You must make these payable to Christie's and there may be conditions.

(v) Cheque

You must make cheques payable to Christie's. Cheques must be from accounts in pounds sterling from a United Kingdom bank.

(vi) You must quote the sale number, lot number(s), your invoice number and Christie's client account number when making a payment. All payments sent by post must be sent to: Christie's, Cashiers Department, 8 King Street, St James's, London, SW1Y 6GT.

(e) For more information please contact our Post-Sale Service Department by phone on +44 (0)20 7352 3200 or fax on +44 (0)20 7352 3300.

2 TRANSFERRING OWNERSHIP TO YOU

You will not own the lot and ownership of the lot will not pass to you until we have received full and clear payment of the **purchase price**, even in circumstances where we have released the lot to the buyer.

3 TRANSFERRING RISK TO YOU

The risk in and responsibility for the lot will transfer to you from whichever is the earlier of the following:

- When you collect the lot; or
- At the end of the 30th day following the date of the auction or, if earlier, the date the lot is taken into care by a third party warehouse as set out on the page headed 'Storage and Collection', unless we have agreed otherwise with you in writing.

4 WHAT HAPPENS IF YOU DO NOT PAY

(a) If you fail to pay us the **purchase price** in full by the **due date**, we will be entitled to do one or more of the following (as well as enforce our rights under paragraph F5 and any other rights or remedies we have by law):

- to charge interest from the **due date** at a rate of 5% a year above the UK Lloyds Bank base rate from time to time on the unpaid amount; we can cancel the sale of the lot. If we do this, we may sell the lot again, publicly or privately on such terms we shall think necessary or appropriate, in which case you will be liable for any shortfall between the **purchase price** and the proceeds from the resale. You must also pay all costs, expenses, losses, damages and legal fees we have to pay or may suffer and any shortfall in the seller's commission on the resale;
- we can pay the seller an amount up to the net proceeds payable in respect of the amount bid by your default in which case you acknowledge and understand that Christie's will have all of the rights of the seller to pursue you for such amounts;
- we can hold you legally responsible for the **purchase price** and may begin legal proceedings to recover it together with other losses, interest, legal fees and costs as far as we are allowed by law;
- we can take what you owe us from any amounts which we or any company in the **Christie's Group** may owe you (including any deposit or other part-payment you have paid to us);
- we can, at our option, revere your identity and contact details to the seller;
- we will not reject at any future auction any bids made by or on behalf of the buyer or to obtain a deposit from the buyer before accepting any bids;
- we can exercise all the rights and remedies of a person holding security over any property in our possession owned by you, whether by way of pledge, security interest or in any other way as permitted by the law of the place where such property is located. You will be deemed to have granted such security to us and we may retain such property as collateral security for your obligations to us; and
- we can take any other action we see necessary or appropriate.

(b) If you owe money to us or to another **Christie's Group** company, we can use any amount you do pay, including any deposit or other part-payment you have made to us or which we owe you, to pay off any amount you owe to us or another **Christie's Group** company for any transaction.

(c) If you make payment in full after the **due date**, and we choose to accept such payment we may charge you storage and transport costs from the date that is 20 calendar days following the auction in accordance with paragraphs G(d) and (ii). In such circumstances paragraph G(d)(iv) shall apply.

5 KEEPING YOUR PROPERTY

If you owe money to us or to another **Christie's Group** company, as well as the rights set out in F4 above, we can use or deal with any of

your property we hold or which is held by another **Christie's Group** company in any way we are allowed to by law. We will only release your property to you if we are satisfied that the purchaser is a member of the **Christie's Group** company in full for what you owe. However, if we choose, we can also sell your property in any way we think appropriate. We will use the proceeds of the sale against any amounts you owe us and we will pay any amount left from that sale to you. If there is a shortfall, you must pay an amount in excess of the amount we have received from the sale and the amount you owe us.

G COLLECTION AND STORAGE

- (a) We ask that you collect purchasing **lots** promptly following the auction (**but note that you may not collect any lot until you have made full and clear payment of all amounts due to us**).
- (b) Information on collecting **lots** is available on the storage and collection page and on an information sheet which you can get from the bidder registration staff or Christie's Post-Sale Services Department on +44 (0)20 7752 3200.
- (c) If you do not collect any **lot** promptly following the auction we can, at our option, remove the **lot** to another Christie's location or an affiliate or third party warehouse.
- (d) If you do not collect a **lot** by the end of the 30th day following the date of the auction, unless otherwise agreed in writing:
 - (i) we will charge you storage costs from that date.
 - (ii) we can at our option move the **lot** to or within an affiliate or third party warehouse and charge you transport costs and administration fees for doing so.
 - (iii) we may sell the **lot** in any commercially reasonable way we think appropriate.
 - (iv) the storage terms which can be found at christies.com/storage shall apply.
 - (v) Nothing in this paragraph is intended to limit our rights under paragraph F4.

H TRANSPORT AND SHIPPING

1 TRANSPORT AND SHIPPING


We will enclose a transport and shipping form with each invoice sent to you. You must make all transport and shipping arrangements. However, we can arrange to pack, transport and ship your property if you ask us to and pay the costs of doing so. We recommend that you ask us for an **estimate**, especially for any large items or items of high value that need professional packing before you bid. We may also suggest other handlers, packers, transporters or experts if you ask us to do so. For more information, please contact Christie's Art Transport on +44 (0)20 7839 9060. See the information set out at www.christies.com/shipping or contact us at arttransport.london@christies.com. We will take reasonable care when we are handling, packing, transporting and shipping a **lot**. However, if we recommend another company for any of these purposes, we are not responsible for their acts, failure to act or neglect.

2 EXPORT AND IMPORT

Any **lot** sold at auction may be affected by laws on exports from the country in which it is sold and the import restrictions of other countries. Many countries require a declaration of export for property leaving the country and/or an import declaration on entry of property into the country. Local laws may prevent you from importing a **lot** or may prevent you selling a **lot** in the country you import it into.

(a) You alone are responsible for getting advice about and meeting the requirements of any laws or regulations which apply to exporting or importing any **lot** prior to bidding. If you are refused a licence or there is a delay in getting one, you must still pay us in full for the **lot**. We may be able to help you apply for the appropriate licences if you ask us to and pay our fee for doing so. However, we cannot guarantee that you will get one. For more information, please contact Christie's Art Transport Department on +44 (0)20 7839 9060. See the information set out at www.christies.com/shipping or contact us at arttransport.london@christies.com.

(b) Lots made of protected species

Lots made of or including (regardless of the percentage) endangered and other protected species of wildlife are marked with the symbol  in the catalogue. This material includes, among other things, ivory, tortoiseshell, crocodile skin, rhinoceros horn, whalebone, certain species of coral, and Brazilian rosewood. You should check the relevant customs laws and regulations before bidding on any **lot** containing wildlife material and you plan to import the **lot** into another country. Several countries refuse to allow you to import property containing these materials, and some other countries require a licence from the relevant regulatory agencies in the countries of exportation as well as importation. In some cases, the **lot** can only be shipped with an independent scientific confirmation of species and/or age and you will need to obtain these at your own cost. If a **lot** contains elephant ivory, or any other wildlife material that could be confused with elephant ivory (for example, mammoth ivory, walrus ivory, helmeted hornbill ivory), please see further important information in paragraph (c) if you are proposing to import the **lot** into the USA. We will not be obliged to cancel your purchase and refund the **purchase price** if your **lot** may not be exported, imported or it is seized for any reason by a government authority. It is your responsibility to determine and satisfy the requirements of any applicable laws or regulations relating to the export or import of property containing such protected or regulated material.

(c) US import ban on African elephant ivory

The USA prohibits the import of ivory from the African elephant. Any **lot** containing elephant ivory or any wildlife material that could be easily confused with elephant ivory (for example, mammoth ivory, walrus ivory, helmeted hornbill ivory) can only be imported into the USA with results of a rigorous scientific test acceptable to Fish & Wildlife, which confirms that the material is not African elephant ivory. Where we have conducted such rigorous scientific testing on a **lot** prior to sale, we will make this clear in the **lot** description. In all other cases, we cannot confirm whether a **lot** contains African elephant ivory, and you will buy that **lot** at your own risk and be responsible for any scientific test or other reports required for import into the USA at your own cost. If such scientific test is inconclusive

or confirms the material is from the African elephant, we will not be obliged to cancel your purchase and refund the **purchase price**.

(d) Lots of Iranian origin

Some countries prohibit or restrict the purchase and/or import of Iranian-origin 'works of conventional craftsmanship' (works that are not by a recognised artist and/or that have a function, for example: bowls, ewers, tiles, ornamental boxes). For example, the USA prohibits the import of this type of property and its purchase by US persons (wherever located). Other countries, such as Canada, only permit the import of this property in certain circumstances. As a convenience to buyers, Christie's indicates under the title of a **lot** if the **lot** originates from Iran (Persia). It is your responsibility to ensure you do not bid on or import a **lot** in contravention of the sanctions or trade embargoes that apply to you.

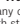
(e) Gold

Gold of less than 18ct does not qualify in all countries as 'gold' and may be refused import into those countries as 'gold'.

(f) Jewellery over 50 years old

Under current laws, jewellery over 50 years old which is worth £39,219 or more will require an export licence which we can apply for on your behalf. It may take up to eight weeks to obtain the export jewellery licence.

(g) Watches

Many of the watches offered for sale in this catalogue are pictured with straps made of endangered or protected animal materials such as alligator or crocodile. These **lots** are marked with the symbol  in the catalogue. These endangered species straps are shown for display purposes only and are not for sale. Christie's will remove and retain the strap prior to shipment from the sale site. At some sale sites, Christie's may, at its discretion, make the displayed endangered species strap available to the buyer at the **lot** free of charge if collected in person from the sale site within one year of the date of the sale. Please check with the department for details on a particular **lot**. For all symbols and other markings referred to in paragraph H2, please note that **lots** are marked as a convenience to you, but we do not accept liability for errors or for failing to mark **lots**.

I OUR LIABILITY TO YOU

(a) We give no **warranty** in relation to any statement made, or information given, by us or our representatives or employees, about a **lot** other than as set out in the **authenticity warranty** and, as far as we are allowed by law, all **warranties** and other terms which may be added to this agreement by law are excluded. The seller's **warranties** contained in paragraph E1 are their own and we do not have any liability to you in relation to those **warranties**.

(b) (i) We are not responsible to you for any reason (whether for breaking this agreement or any other matter relating to your purchase of or bid for, any **lot**) unless we are in default, fraud or fraudulent misrepresentation by us or other than as expressly set out in these Conditions of Sale; or

(ii) We do not give any representation, **warranty** or assume any liability of any kind in respect of any **lot** with regard to merchantability, fitness for a particular purpose, description, size, quality, condition, attribution, authenticity, rarity, importance, medium, provenance, exhibition history, literature, or historical relevance. Except as required by local law, any **warranty** of any kind is excluded by this paragraph.

In particular, please be aware that our written and telephone bidding services, Christie's LIVE™, condition reports, currency converter and saleroom video screens are free services and we are not responsible to you for any error (human or otherwise), omission or breakdown in these services.

(d) We have no responsibility to any person other than a buyer in connection with the purchase of any **lot**.

(e) If, in spite of the terms in paragraphs (a) to (d) or E2(i) above, we are found to be liable to you for any reason, we shall not have to pay more than the **purchase price** paid by you to us. We will not be responsible to you for any reason for loss of profits or business, loss of opportunity or value, expected savings or interest, costs, damages, or expenses.

J OTHER TERMS

1 OUR ABILITY TO CANCEL

In addition to the other rights of cancellation contained in this agreement, we can cancel a sale of a **lot** if we reasonably believe that completing the transaction is, or may be, unlawful or that the sale places us or the seller under any liability to anyone else or may damage our reputation.

2 RECORDINGS

We may videotape and record proceedings at any auction. We will keep any personal information confidential, except to the extent disclosure is required by law. However, we may, through this process, use or share these recordings with another **Christie's Group** company and marketing partners to analyse our customers and to help us to tailor our services for buyers. If you do not want to be videotaped, you may make arrangements to make a telephone or written bid bid on Christie's LIVE™ instead. Unless we agree otherwise in writing, you may not videotape or record proceedings at any auction.

3 COPYRIGHT

We own the copyright in all images, illustrations and written material produced by or for us relating to a **lot** including the contents of our catalogues unless otherwise noted in the catalogue. You cannot use them without our prior written permission. We do not offer any guarantee that you will gain any copyright or other reproduction rights to the **lot**.

4 ENFORCING THIS AGREEMENT

If a court finds that any part of this agreement is not valid or is illegal or impossible to enforce, that part of the agreement will be treated as being deleted and the rest of this agreement will not be affected.

5 TRANSFERRING YOUR RIGHTS AND RESPONSIBILITIES

You may not grant a security over or transfer your rights or responsibilities under these terms on the contract of sale with the buyer unless we have given our written permission. This agreement will be binding on your successors or estate and anyone who takes over your rights and responsibilities.

6 TRANSLATIONS

If we have provided a translation of this agreement, we will use the original version in deciding any issues or disputes which arise under this agreement.

7 PERSONAL INFORMATION

We will hold and process your personal information and may pass it to another **Christie's Group** company for use as described in, and in line with, our privacy policy at www.christies.com.

8 WAIVER

No failure or delay to exercise any right or remedy provided under these Conditions of Sale shall constitute a waiver of that or any other right or remedy, nor shall it prevent or restrict the further exercise of that or any other right or remedy. No single or partial exercise of such right or remedy shall prevent or restrict the further exercise of that or any other right or remedy.

9 LAW AND DISPUTES

This agreement, and any non-contractual obligations arising out of or in connection with this agreement, or any other rights you may have relating to the purchase of a **lot** will be governed by the laws of England and Wales. Before we or you start any court proceedings (except in the limited circumstances where the dispute, controversy or claim is related to proceedings brought by someone else and this dispute could be joined to those proceedings), we agree we will each try to settle the dispute by mediation following the Centre for Effective Dispute Resolution (CEDR) Model Mediation Procedure. We will use a mediator affiliated with CEDR who we and you agree to. If the dispute is not settled by mediation, you agree for our benefit that the dispute will be referred to a final and binding arbitration by the courts of England and Wales. However, we will have the right to bring proceedings against you in any other court.

10 REPORTING ON WWW.CHISTIES.COM

Details of all **lots** sold by us, including **catalogue descriptions** and prices, may be reported on www.christies.com. Sales totals are **hammer price plus buyer's premium** and do not reflect costs financing fees, or application of buyer's or seller's credits. We regret that we cannot agree to requests to remove these details from www.christies.com.

K GLOSSARY

- authenticity warranty:** a genuine example, rather than a copy or forgery of:
 - (i) the work of a particular artist, author or manufacturer, if the **lot** is described in the **Heading** as the work of that artist, author or manufacturer;
 - (ii) a work created within a particular period or culture, if the **lot** is described in the **Heading** as a work created during that period or culture;
 - (iii) a work for a particular origin source if the **lot** is described in the **Heading** as being of that origin or source; or
 - (iv) in the case of gems, a work which is made of a particular material, if the **lot** is described in the **Heading** as being made of that material.

authenticity warranty: the guarantee we give in this agreement that a **lot** is **authentic** as set out in section E2 of this agreement.

buyer's premium: the charge the buyer pays us along with the **hammer price**.

catalogue description: the description of a **lot** in the catalogue for the auction, as amended by any saleroom notice.

Christie's Group: Christie's International Plc, its subsidiaries and other companies within its corporate group.

condition: the physical condition of a **lot**.

due date: has the meaning given to it in paragraph F1(a).

estimate: the price range included in the catalogue or any saleroom notice within which we believe a **lot** may sell. **Low estimate** means the lower figure in the range and **high estimate** means the higher figure. The **mid estimate** is the midpoint between the two.

hammer price: the amount of the highest bid the auctioneer accepts for the sale of a **lot**.

Heading: has the meaning given to it in paragraph E2.

lot: an item to be offered at auction (or two or more items to be offered at auction as a group).

other damages: any special, consequential, incidental or indirect damages of any kind or any damages which fall within the meaning of 'special', 'incidental' or 'consequential' under local law.

purchase price: has the meaning given to it in paragraph F1(a).

provenance: the ownership history of a **lot**.

qualified: has the meaning given to it in paragraph E2 and **Qualified Headings** means the section headed **Qualified Headings** on the page of the catalogue headed 'Important Notices and Explanation of Cataloguing Practice'.

reserve: the confidential amount below which we will not sell a **lot**.

saleroom notice: a written notice posted next to the **lot** in the saleroom and on www.christies.com, which is also read to prospective telephone bidders and notified to clients who have left commission bids, or an announcement made by the auctioneer either at the beginning of the sale, or before a particular **lot** is auctioned.

UPPER CASE type: means having all capital letters.

warranty: a statement or representation in which the person making it guarantees that the facts set out in it are correct.

VAT SYMBOLS AND EXPLANATION

You can find a glossary explaining the meanings of words coloured in bold on this page at the end of the section of the catalogue headed 'Conditions of Sale'

VAT payable

| Symbol | |
|-----------|---|
| No Symbol | We will use the VAT Margin Scheme. No VAT will be charged on the hammer price . VAT at 20% will be added to the buyer's premium but will not be shown separately on our invoice. |
| † θ | We will invoice under standard VAT rules and VAT will be charged at 20% on both the hammer price and buyer's premium and shown separately on our invoice. For qualifying books only, no VAT is payable on the hammer price or the buyer's premium . |
| * | These lots have been imported from outside the EU for sale and placed under the Temporary Admission regime. Import VAT is payable at 5% on the hammer price . VAT at 20% will be added to the buyer's premium but will not be shown separately on our invoice. |
| Ω | These lots have been imported from outside the EU for sale and placed under the Temporary Admission regime. Customs Duty as applicable will be added to the hammer price and Import VAT at 20% will be charged on the Duty Inclusive hammer price . VAT at 20% will be added to the buyer's premium but will not be shown separately on our invoice. |
| α | The VAT treatment will depend on whether you have registered to bid with an EU or non-EU address: <ul style="list-style-type: none"> • If you register to bid with an address within the EU you will be invoiced under the VAT Margin Scheme (see No Symbol above). • If you register to bid with an address outside of the EU you will be invoiced under standard VAT rules (see † symbol above) |
| ‡ | For wine offered 'in bond' only. If you choose to buy the wine in bond no Excise Duty or Clearance VAT will be charged on the hammer . If you choose to buy the wine out of bond Excise Duty as applicable will be added to the hammer price and Clearance VAT at 20% will be charged on the Duty inclusive hammer price . Whether you buy the wine in bond or out of bond, 20% VAT will be added to the buyer's premium and shown on the invoice. |

VAT refunds: what can I reclaim?

If you are:

| A non VAT registered UK or EU buyer | | No VAT refund is possible |
|-------------------------------------|-----------------|--|
| UK VAT registered buyer | No symbol and α | The VAT amount in the buyer's premium cannot be refunded. However, on request we can re-invoice you outside of the VAT Margin Scheme under normal UK VAT rules (as if the lot had been sold with a † symbol). Subject to HMRC's rules, you can then reclaim the VAT charged through your own VAT return. |
| | * and Ω | Subject to HMRC's rules, you can reclaim the Import VAT charged on the hammer price through your own VAT return when you are in receipt of a C79 form issued by HMRC. The VAT amount in the buyer's premium is invoiced under Margin Scheme rules so cannot normally be claimed back. However, if you request to be re-invoiced outside of the Margin Scheme under standard VAT rules (as if the lot had been sold with a † symbol) then, subject to HMRC's rules, you can reclaim the VAT charged through your own VAT return. |
| EU VAT registered buyer | No Symbol and α | The VAT amount in the buyer's premium cannot be refunded. However, on request we can re-invoice you outside of the VAT Margin Scheme under normal UK VAT rules (as if the lot had been sold with a † symbol). See below for the rules that would then apply. |
| | † | If you provide us with your EU VAT number we will not charge VAT on the buyer's premium . We will also refund the VAT on the hammer price if you ship the lot from the UK and provide us with proof of shipping, within three months of collection. |
| | * and Ω | The VAT amount on the hammer and in the buyer's premium cannot be refunded. However, on request we can re-invoice you outside of the VAT Margin Scheme under normal UK VAT rules (as if the lot had been sold with a † symbol). See above for the rules that would then apply. |
| Non EU buyer | | If you meet ALL of the conditions in notes 1 to 3 below we will refund the following tax charges: |
| | No Symbol | We will refund the VAT amount in the buyer's premium . |
| | † and α | We will refund the VAT charged on the hammer price. VAT on the buyer's premium can only be refunded if you are an overseas business. The VAT amount in the buyer's premium cannot be refunded to non-trade clients. |
| | ‡ (wine only) | No Excise Duty or Clearance VAT will be charged on the hammer price providing you export the wine while 'in bond' directly outside the EU using an Excise authorised shipper. VAT on the buyer's premium can only be refunded if you are an overseas business. The VAT amount in the buyer's premium cannot be refunded to non-trade clients. |
| | * and Ω | We will refund the Import VAT charged on the hammer price and the VAT amount in the buyer's premium . |

1. We **CANNOT** offer refunds of VAT amounts or Import VAT to buyers who do not meet all applicable conditions in full. If you are unsure whether you will be entitled to a refund, please contact Client Services at the address below **before you bid**.

2. No VAT amounts or Import VAT will be refunded where the total refund is under £100.

3. In order to receive a refund of VAT amounts/Import VAT (as applicable) non-EU buyers must:
 (a) have registered to bid with an address outside of the EU; **and**
 (b) provide immediate proof of correct export out of the EU within the required time frames of: 30 days via a controlled export for † and Ω **lots**. All other **lots** must be exported within three months of collection.

4. Details of the documents which you must provide to us to show satisfactory proof of export/shipping are available from our VAT team at the address below. We charge a processing fee of £35.00 per invoice to check shipping/export documents. We will waive this processing fee if you appoint Christie's Shipping Department to arrange your export/shipping.

5. If you appoint Christie's Art Transport or one of our authorised shippers to arrange your export/shipping we will issue you with an export invoice with the applicable VAT or duties cancelled as outlined above. If you later cancel or change the shipment in a manner that infringes the rules outlined above we will issue a revised invoice charging you all applicable taxes/charges.

6. If you ask us to re-invoice you under normal UK VAT rules (as if the **lot** had been sold with a † symbol) instead of under the Margin Scheme the **lot** may become ineligible to be resold using the Margin Schemes. **Movement within the EU must be within 3 months from the date of sale.** You should take professional advice if you are unsure how this may affect you.

7. All invoicing requests must be received within four years from the date of sale. If you have any questions about VAT refunds please contact Christie's Client Services on info@christies.com
 Tel: +44 (0)20 7389 2886.
 Fax: +44 (0)20 7839 1611.

SYMBOLS USED IN THIS CATALOGUE

The meaning of words coloured in **bold** in this section can be found at the end of the section of the catalogue headed 'Conditions of Sale'.

○ Christie's has a direct financial interest in the lot. See Important Notices and Explanation of Cataloguing Practice.

△ Owned by Christie's or another **Christie's Group** company in whole or part. See Important Notices and Explanation of Cataloguing Practice.

◆ Christie's has a direct financial interest in the **lot** and has funded all or part of our interest with the help of someone else. See Important Notices and Explanation of Cataloguing Practice.

λ Artist's Resale Right. See Section D3 of the Conditions of Sale.

• **Lot** offered without **reserve** which will be sold to the highest bidder regardless of the pre-sale estimate in the catalogue.

~ **Lot** incorporates material from endangered species which could result in export restrictions. See Section H2(b) of the Conditions of Sale.

ψ **Lot** incorporates material from endangered species which is shown for display purposes only and is not for sale. See Section H2(g) of the Conditions of Sale.

?, *, Ω, α, #, † See VAT Symbols and Explanation.

■ See Storage and Collection Pages.

Please note that **lots** are marked as a convenience to you and we shall not be liable for any errors in, or failure to, mark a **lot**.

IMPORTANT NOTICES AND EXPLANATION OF CATALOGUING PRACTICE

CHRISTIE'S INTEREST IN PROPERTY CONSIGNED FOR AUCTION

△ **Property Owned in part or in full by Christie's**
From time to time, Christie's may offer a **lot** which it owns in whole or in part. Such property is identified in the catalogue with the symbol △ next to its **lot** number.

○ **Minimum Price Guarantee**
On occasion, Christie's has a direct financial interest in the outcome of the sale of certain lots consigned for sale. This will usually be where it has guaranteed to the Seller that whatever the outcome of the auction, the Seller will receive a minimum sale price for the work. This is known as a minimum price guarantee. Where Christie's holds such financial interest we identify such **lots** with the symbol ○ next to the **lot** number.

◆ **Third Party Guarantees/Irrevocable bids**
Where Christie's has provided a Minimum Price Guarantee it is at risk of making a loss, which can be significant, if the **lot** fails to sell. Christie's therefore sometimes chooses to share that risk with a third party. In such cases the third party agrees prior to the auction to place an irrevocable written bid on the **lot**. The third party is therefore committed to bidding on the **lot** and, even if there are no other bids, buying the **lot** at the level of the written bid unless there are any higher bids. In doing so, the third party takes on all or part of the risk of the **lot** not being sold. If the **lot** is not sold, the third party may incur a loss. **Lots** which are subject to a third party guarantee arrangement are identified in the catalogue with the symbol ◆.

In most cases, Christie's compensates the third party in exchange for accepting this risk. Where the third party is the successful bidder, the third party's remuneration is based on a fixed financing fee. If the third party is not the successful bidder, the remuneration may either be based on a fixed fee or an amount calculated against the final **hammer price**. The third party may also bid for the **lot** above the written bid. Where the third party is the successful bidder, Christie's will report the final **purchase price** net of the fixed financing fee.

Third party guarantors are required by us to disclose to anyone they are advising their financial interest in any **lots** they are guaranteeing. However, for the avoidance of any doubt, if you are advised by or bidding through an agent on a **lot** identified as being subject to a third party guarantee you should always ask your agent to confirm whether or not he or she has a financial interest in relation to the **lot**.

Other Arrangements

Christie's may enter into other arrangements not involving bids. These include arrangements where Christie's has given the Seller an Advance on the proceeds of sale of the **lot** or where Christie's has shared the risk of a guarantee with a partner without the partner being required to place an irrevocable written bid or otherwise participating in the bidding on the **lot**. Because such arrangements are unrelated to the bidding process they are not marked with a symbol in the catalogue.

Bidding by parties with an interest

In any case where a party has a financial interest in a **lot** and intends to bid on it we will make a saleroom announcement to ensure that all bidders are aware of this. Such financial interests can include where beneficiaries of an Estate have reserved the right to bid on a **lot** consigned by the Estate or where a partner in a risk-sharing arrangement has reserved the right to bid on a **lot** and/or notified us of their intention to bid.

Please see <http://www.christies.com/financial-interest/> for a more detailed explanation of minimum price guarantees and third party financing arrangements.

Where Christie's has an ownership or financial interest in every **lot** in the catalogue, Christie's will not designate each **lot** with a symbol, but will state its interest in the front of the catalogue.

POST 1950 FURNITURE

All items of post-1950 furniture included in this sale are items either not originally supplied for use in a private home or now offered solely as works of art. These items may not comply with the provisions of the Furniture and Furnishings (Fire) (Safety) Regulations 1988 (as amended in 1989 and 1993, the 'Regulations'). Accordingly, these items should not be used as furniture in your home in their current condition. If you do intend to use such items for this purpose, you must first ensure that they are reupholstered, restuffed and/or recovered (as appropriate) in order that they comply with the provisions of the Regulations.

EXPLANATION OF CATALOGUING PRACTICE

Terms referred to in paragraph 2 are as follows:-
A work catalogued with the name(s) or recognised designation of an artist, without any qualification, is, in our opinion, a work by the artist.

In other cases, the following expressions, with the following meanings are used:

"Attributed to ..."

in our opinion probably a work by the artist in whole or in part.

"Studio of ..."

"Workshop of ..."

in our opinion a work executed in the studio or workshop of the artist, possibly under his supervision.

"Circle of ..."

in our opinion a work of the period of the artist and showing his influence.

"Follower of ..."

in our opinion a work executed in the artist's style but not necessarily by a pupil.

"Manner of ..."

in our opinion a work executed in the artist's style but of a later date.

"After ..."

in our opinion a copy (of any date) of a work of the artist.

"Signed ..."

"Dated ..."

"Inscribed ..."

in our opinion the work has been signed/dated/inscribed by the artist. The addition of a question mark indicates an element of doubt.

"With signature ..."

"With date ..."

"With inscription ..."

in our opinion the signature/date/inscription/stamp is by a hand other than that of the artist.

REFERENCE NUMBERS

Where applicable, the numbers which accompany the title of each lot refer to the catalogue raisonné compiled by Felix Marcilhac 'R. Laliq. oeuvre de Verre' (Paris 1994).

STORAGE AND COLLECTION

COLLECTION LOCATION AND TERMS

Specified **lots** (sold and unsold) marked with a filled square (■) not collected from Christie's by 5.00 pm on the day of the sale will, at our option, be removed to Christie's Park Royal. Christie's will inform you if the **lot** has been sent offsite. Our removal and storage of the **lot** is subject to the terms and conditions of storage which can be found at [Christies.com/storage](https://www.christies.com/storage) and our fees for storage are set out in the table below - these will apply whether the **lot** remains with Christie's or is removed elsewhere.

If the **lot** is transferred to Christie's Park Royal, it will be available for collection from 12 noon on the second business day following the sale.

Please call Christie's Client Service 24 hours in advance to book a collection time at Christie's Park Royal. All collections from Christie's Park Royal will be by pre-booked appointment only.

Tel: +44 (0)20 7839 9060

Email: cscollectionsuk@christies.com.

If the **lot** remains at Christie's it will be available for collection on any working day 9.00am to 5.00pm. **Lots** are not available for collection at weekends.

PAYMENT OF ANY CHARGES DUE

ALL lots whether sold or unsold will be subject to storage and administration fees. Please see the details in the table below. Storage Charges may be paid in advance or at the time of collection.

Lots may only be released on production of the 'Collection Form' from Christie's. **Lots** will not be released until all outstanding charges are settled.

SHIPPING AND DELIVERY

Christie's Post-Sale Service can organise local deliveries or international freight. Please contact them on +44 (0)20 7752 3200 or PostSaleUK@christies.com. To ensure that arrangements for the transport of your lot can be finalised before the expiry of any free storage period, please contact Christie's Post-Sale Service for a quote as soon as possible after the sale.

PHYSICAL LOSS & DAMAGE LIABILITY

Christie's will accept liability for physical loss and damage to sold **lots** whilst in storage. Christie's liability will be limited to the invoice purchase price including buyers' premium. Christie's liability will continue until the **lots** are collected by you or an agent acting for you following payment in full. Christie's liability is subject to Christie's Terms and Conditions of Liability posted on www.christies.com.

| ADMINISTRATION FEE, STORAGE & RELATED CHARGES | | |
|---|---|--|
| CHARGES PER LOT | LARGE OBJECTS E.g. Furniture, Large Paintings & Sculpture | SMALL OBJECTS E.g. Books, Luxury, Ceramics, Small Paintings |
| 1-30 days after the auction | Free of Charge | Free of Charge |
| 31st day onwards: Administration Fee | £70.00 | £35.00 |
| Storage per day | £8.00 | £4.00 |
| Loss & Damage Liability | Will be charged on purchased lots at 0.5% of the hammer price or capped at the total storage charge, whichever is the lower amount. | |
| All charges are subject to VAT. Please note that there will be no charge to clients who collect their lots within 30 days of this sale. Size to be determined at Christie's discretion. | | |

CHRISTIE'S WAREHOUSE

Unit 7, Central Park
Acton Lane
London NW10 7FY

COLLECTION FROM CHRISTIE'S PARK ROYAL

Please note that Christie's Park Royal's opening hours are Monday to Friday 9.00 am to 5.00 pm and lots transferred to their warehouse are not available for collection at weekends.





RENÉ LALIQUE 1860-1945

Vase, vers 1897-1899

Verre opalescent soufflé et argent / opalescent blown glass and silver

H 15 cm. (6 in.)

€20,000-30,000

BEYOND BOUNDARIES

DESIGN EVENING SALE

Paris, 20 November 2017

VIEWING

15-19 November 2017

9, Avenue Matignon

75008 Paris

CONTACT

Pauline De Smedt

pdesmedt@christies.com

+33 (0)1 40 76 83 54

Other fees apply in addition to the hammer price. See Section D of our Conditions of Sale at the back of the Auction Catalogue

CHRISTIE'S



JEAN DUNAND (1877-1942) & JEAN LAMBERT-RUCKI (1888-1967)
'Le Cirque' or 'Encounters' a four-panel screen, circa 1923
lacquered wood, inlaid with eggshell
each panel: 74 ¾ in. (189.6 cm.) x 21 in. (53 cm.)
signed in lacquer Jean Dunand Laqueur and J. Lambert-Rucki
\$60,000-80,000

DESIGN

New York, 14 December 2017

VIEWING

9-13 December 2017
20 Rockefeller Plaza
New York, NY 10020

CONTACT

Carina Villinger
cvillinger@christies.com
+1 212 636 2240

Other fees apply in addition to the hammer price. See Section D of our Conditions of Sale at the back of the Auction Catalogue

CHRISTIE'S

WORLDWIDE SALEROOMS AND OFFICES AND SERVICES

ARGENTINA
BUENOS AIRES
+54 11 43 35 42 22
Cristina Carlisle

AUSTRALIA
SYDNEY
+61 (0)2 9326 1422
Ronan Sulich

AUSTRIA
VIENNA
+43 (0)1 533 88124
Angela Bailou

BELGIUM
BRUSSELS
+32 (0)2 512 88 30
Roland de Lathuy

BRAZIL
SÃO PAULO
+5511 3061 2576
Nathalie Lenci

CHILE
SANTIAGO
+56 2 2 2831642
Denise Ratinoﬀ
de Lira

COLOMBIA
BOGOTA
+571 635 54 00
Juanita Madrinan

DENMARK
COPENHAGEN
+45 3962 2377
Birgitta Hillingsø
(Consultant)

+45 2612 0092
Rikke Juel Brandt
(Consultant)

**FINLAND AND
THE BALTIC STATES**
HELSINKI
+358 40 5837945
Barbro Schauman
(Consultant)

FRANCE
**BRITTANY AND
THE LOIRE VALLEY**
+33 (0)6 09 44 90 78
Virginie Gregory
(Consultant)

**GREATER
EASTERN FRANCE**
+33 (0)6 07 16 34 25
Jean-Louis Janin Daviet
(Consultant)

NORD-PAS DE CALAIS
+33 (0)6 09 63 21 02
Jean-Louis Brémilts
(Consultant)

PARIS
+33 (0)1 40 76 85 85

**POITOU-CHARENTE
AQUITAINE**
+33 (0)5 56 81 65 47
Marie-Cécile Moueix

**PROVENCE -
ALPES CÔTE D'AZUR**
+33 (0)6 71 99 97 67
Fabienne Albertini-Cohen

HÔNE ALPES
+33 (0)6 61 81 82 53
Dominique Pierron
(Consultant)

GERMANY
DÜSSELDORF
+49 (0)214 91 59 352
Arno Verkade

FRANKFURT
+49 178 840 7950
Natalie Radzivil

HAMBURG
+49 (0)40 27 94 073
Christiane Gräfin zu Rantzau

MUNICH
+49 (0)89 24 20 96 80
Marie Christine Gräfin Huyn

STUTTGART
+49 (0)71 12 26 96 99
Eva Susanne
Schweizer

INDIA
MUMBAI
+91 (22) 2280 7905
Sonal Singh

INDONESIA
JAKARTA
+62 (0)21 7278 6268
Charmie Hamami

ISRAEL
TEL AVIV
+972 (0)3 696 0695
Roni Gilat-Baharaff

ITALY
MILAN
+39 02 303 2831

ROME
+39 06 686 3333
Marina Cicogna

NORTH ITALY
+39 348 3131 021
Paola Gradi
(Consultant)

TURIN
+39 347 2211 541
Chiara Massimello
(Consultant)

VENICE
+39 041 277 0086
Bianca Arrivabene Valenti
Gonzaga (Consultant)

BOLOGNA
+39 051 265 154
Benedetta Possati Vittori
Venenti (Consultant)

GENOA
+39 010 245 3747
Rachele Guicciardi
(Consultant)

FLORENCE
+39 055 219 012
Alessandra Niccolini di
Camugliano (Consultant)

**CENTRAL &
SOUTHERN ITALY**
+39 348 520 2974
Alessandra Allaria
(Consultant)

JAPAN
TOKYO
+81 (0)3 6267 1766
Chie Banta

MALAYSIA
KUALA LUMPUR
+65 6735 1766
Nicole Tee

MEXICO
MEXICO CITY
+52 55 5281 5546
Gabriela Lobo

MONACO
+37 97 97 11 00
Nancy Dotta

THE NETHERLANDS
-AMSTERDAM
+31 (0)20 57 55 255

NORWAY
OSLO
+47 949 89 294
Cornelia Svedman
(Consultant)

**PEOPLES REPUBLIC
OF CHINA**
BEIJING
+86 (0)10 8583 1766

-HONG KONG
+852 2760 1766

-SHANGHAI
+86 (0)21 6355 1766

PORTUGAL
LISBON
+351 919 317 233
Mafalda Pereira Coutinho
(Consultant)

RUSSIA
MOSCOW
+7 495 337 6364
+44 20 7389 2318
Katya Vinokurova

SINGAPORE
SINGAPORE
+65 6735 1766
Nicole Tee

SOUTH AFRICA
CAPE TOWN
+27 (21) 761 2676
Juliet Lomberg
(Independent Consultant)

**DURBAN &
JOHANNESBURG**
+27 (31) 207 8247
Gillian Scott-Berning
(Independent Consultant)

WESTERN CAPE
+27 (44) 533 5178
Annabelle Conyngham
(Independent Consultant)

SOUTH KOREA
SEOUL
+82 2 720 5266
Jun Lee

SPAIN
MADRID
+34 (0)91 532 6626
Carmen Schjaer
Dalia Padilla

SWEDEN
STOCKHOLM
+46 (0)73 645 2891
Claire Ahman (Consultant)
+46 (0)70 9369 201
Louise Dyhlién (Consultant)

SWITZERLAND
-GENÈVA
+41 (0)22 319 1766
Eveline de Proyart

ZÜRICH
+41 (0)44 268 1010
Julita Nixdorf

TAIWAN
TAIPEI
+886 2 2736 3356
Ada Ong

THAILAND
BANGKOK
+66 (0)2 652 1097
Benjawan Uraipraivan

TURKEY
ISTANBUL
+90 (532) 558 7514
Eda Kehale Argun
(Consultant)

UNITED ARAB EMIRATES
-DUBAI
+971 (0)4 425 5647

UNITED KINGDOM
-LONDON
+44 (0)20 7839 9060

NORTH AND NORTHEAST
+44 (0)20 3219 6010
Thomas Scott

**NORTHWEST
AND WALES**
+44 (0)20 7752 3033
Jane Blood

SOUTH
+44 (0)1730 814 300
Mark Wrey

SCOTLAND
+44 (0)131 225 4756
Bernard Williams
Robert Lagneau
David Bowes-Lyon
(Consultant)

ISLE OF MAN
+44 (0)20 7389 2032

CHANNEL ISLANDS
-LONDON
+44 (0)20 7389 2032

IRELAND
+353 (0)87 638 0996
Christine Ryall (Consultant)

UNITED STATES
CHICAGO
+1 312 787 2765
Catherine Busch

DALLAS
+1 214 599 0735
Caperia Ryan

HOUSTON
+1 713 802 0191
Jessica Phifer

LOS ANGELES
+1 310 385 2600
Sonya Roth

MIAMI
+1 305 445 1487
Jessica Katz

-NEW YORK
+1 212 636 2000

SAN FRANCISCO
+1 415 982 0982
Ellanor Notides

AUCTION SERVICES

CORPORATE COLLECTIONS
Tel: +44 (0)20 7389 2548
Email: norchard@christies.com

FINANCIAL SERVICES
Tel: +44 (0)20 7389 2624
Fax: +44 (0)20 7389 2204

HERITAGE AND TAXATION
Tel: +44 (0)20 7389 2101
Fax: +44 (0)20 7389 2300
Email: rcornett@christies.com

**PRIVATE COLLECTIONS AND
COUNTRY HOUSE SALES**
Tel: +44 (0)20 7389 2343
Fax: +44 (0)20 7389 2225
Email: awaters@christies.com

MUSEUM SERVICES, UK
Tel: +44 (0)20 7389 2370
Email: llindsay@christies.com

VALUATIONS
Tel: +44 (0)20 7389 2464
Fax: +44 (0)20 7389 2038
Email: mwrey@christies.com

OTHER SERVICES

**CHRISTIE'S EDUCATION
LONDON**
Tel: +44 (0)20 7665 4350
Fax: +44 (0)20 7665 4351
Email: london@christies.edu

NEW YORK
Tel: +1 212 355 1501
Fax: +1 212 355 7370
Email: newyork@christies.edu

HONG KONG
Tel: +852 2978 6768
Fax: +852 2525 3856
Email: hongkong@christies.edu

**CHRISTIE'S FINE ART
STORAGE SERVICES**
NEW YORK
+1 212 974 4570
Email: newyork@cfass.com

SINGAPORE
Tel: +65 6543 5252
Email: singapore@cfass.com

**CHRISTIE'S INTERNATIONAL
REAL ESTATE**
NEW YORK
Tel: +1 212 468 7182
Fax: +1 212 468 7141
Email: info@christiesrealestate.com

LONDON
Tel: +44 20 7389 2551
Fax: +44 20 7389 2168
Email: info@christiesrealestate.com

DALLAS
Tel: +1 214 599 0735
Fax: +852 2978 6788
Email: info@christiesrealestate.com

HONG KONG
Tel: +852 2978 6788
Fax: +852 2973 0799
Email: info@christiesrealestate.com

• DENOTES SALEROOM

ENQUIRIES — Call the Saleroom or Office
For a complete salerooms & offices listing go to christies.com

EMAIL — info@christies.com

05/10/17

CHRISTIE'S

CHRISTIE'S INTERNATIONAL PLC

François Pinault, Chairman
Patricia Barbizet, Deputy Chairwoman
Guillaume Cerutti, Chief Executive Officer
Jussi Pylkkänen, Global President
Stephen Brooks, Deputy Chief Executive Officer
François Curiel, Chairman, Europe & Asia
Loïc Brivezac, Gilles Eruilin, Gilles Pagniez
Héloïse Temple-Boyer
Sophie Carter, Company Secretary

INTERNATIONAL CHAIRMEN

Stephen Lash, Chairman Emeritus, Americas
The Earl of Snowdon, Honorary Chairman, EMERI
Charles Cator, Deputy Chairman, Christie's Int.
Xin Li, Deputy Chairwoman, Christie's Int.

CHRISTIE'S EUROPE, MIDDLE EAST, RUSSIA AND INDIA (EMERI)

François Curiel, Chairman
Prof. Dr. Dirk Boll, President
Bertold Mueller, Managing Director,
Continental Europe, Middle East, Russia & India

SENIOR DIRECTORS, EMERI

Zoe Ainscough, Simon Andrews, Mariolina Bassetti,
Ellen Berkeley, Jill Berry, Giovanna Bertazzoni,
Edouard Boccon-Gibod, Peter Brown, Olivier Camu,
Karen Carroll, Sophie Carter, Karen Cole, Paul Cutts,
Isabelle de La Bruyere, Roland de Lathuy,
Eveline de Proyart, Leila de Vos, Harriet Drummond,
Adele Falconer, David Findlay, Margaret Ford,
Edmond Francey, Daniel Gallen, Roni Gilat-Baharaff,
Philip Harley, James Hastie, Karl Hermanns,
Rachel Hilderley, Jetske Homan Van Der Heide
Nick Hough, Michael Jeha, Donald Johnston,
Erem Kassim-Lakha, Nicholas Lambourn,
William Lorimer, Catherine Lambson,
Jeremy Morrison, Nicholas Orchard, Francis Outred,
Henry Pettifer, Steve Phipps, Will Porter,
Paul Raison, Christiane Rantzaou, Tara Rastrick,
Amjad Rauf, François de Ricqlès, William Robinson,
Matthew Rubinger, Andreas Rumber, Marc Sands,
Tim Schmelcher, John Stainton, Nicola Steel,
Aline Sylla-Walbaum, Sheridan Thompson,
Alexis de Tiesenhausen, Jay Vincze,
Andrew Ward, David Warren, Andrew Waters,
Harry Williams-Bulkeley, André Zlattinger

CHRISTIE'S ADVISORY BOARD, EUROPE

Pedro Girao, Chairman,
Arpad Busson, Kemal Has Cingilioglu,
Genevra Elkann, I. D. Fürstin zu Fürstenberg,
Laurence Graff, H.R.H. Prince Pavlos of Greece,
Marquesa de Bellavista Mrs Alicia Koplowitz,
Robert Manoukian, Rosita, Duchess of Marlborough,
Countess Daniela Memmo d'Amelio,
Usha Mittal, Çiğdem Simavi

CHRISTIE'S UK

CHAIRMAN'S OFFICE, UK
Orlando Rock, Chairman
Noël Annesley, Honorary Chairman;
Richard Roundell, Vice Chairman;
Robert Copley, Deputy Chairman;
The Earl of Halifax, Deputy Chairman;
Francis Russell, Deputy Chairman;
Julia Delves Broughton, James Hervey-Bathurst,
Nicholas White, Mark Wrey

DIRECTORS, UK

Cristian Albu, Marco Almeida, Maddie Amos,
Katharine Arnold, Alexis Ashot, Guy Agazarian,
Alexandra Baker, Sven Becker, Jane Blood,
Piers Boothman, David Bowes-Lyon,
Louise Broadhurst, Robert Brown, Lucy Campbell,
Jason Carey, Sarah Charles, Romilly Collins,
Ruth Cornett, Jessica Corsi, Nicky Crosbie,
Laetitia Delaloye, Armelle de Laubier-Rhally,
Eugenio Donadoni, Virginie Dulucq,
Christopher O'Neil-Dunne, Anna Evans,
Arne Everwijn, Nick Finch, Emily Fisher, Peter Flory,
Nina Foote, Christopher Forrest, Giles Forster,
Rebecca Gibson, Zita Gibson, Alexandra Gill,
Keith Gill, Leonie Grainger, Angus Granlund,
David Gregory, Annabel Hesketh, Sydney Hornsby,
Peter Horwood, Adrian Hume-Sayer,
Kate Hunt, Pippa Jacob, Simon James,
Sabine Kegel, Hans-Peter Keller, Tjabel Klof,
Robert Lagneau, Tina Law, Adriana Leese,
Tom Legh, Brandon Lindberg, Murray Macaulay,
Graeme Maddison, Sarah Mansfield,
Nicolas Martineau, Astrid Mascher, Roger Massey,
Joy McCall, Neil McCutcheon, Michelle McMullan,
Daniel McPherson, Neil Millen, Leonie Moschner,
Chris Munro, Liberte Nuti, Beatriz Ordoñas,
Rosalind Patient, Anthea Peers, Keith Penton,
Romain Pingannaud, Sara Plumbly, Lisa Redpath,
Sumiko Roberts, Alice de Roquemaurel,
François Rothlisberger, Patrick Saich, Tom Scott,
Dominic Simpson, Nick Sims, Clementine Sinclair,
Sonal Singh, Katie Siveyer, Kay Sutton, Rakhi Talwar,
Zain Talyarkhan, Timothy Triptree, Thomas Venning,
Edwin Vos, Amelia Walker, Ben Wiggins,
Bernard Williams, Georgina Wisenach, Geoff Young

ASSOCIATE DIRECTORS, UK

Ksenia Apukhtina, Giulia Archetti, Sarah Boswell,
Phill Brakefield, Clare Bramwell, Jenny Brown,
Antonia Calnan, David Cassidy, Alexandra Cawte,
Marie-Louise Chaldecott, Helen Culver Smith,
Charlotte Delaney, Freddie De Rougemont,
Grant Deudney, Milo Dickinson,
Alessandro Diotallevi, David Ellis, Amanda Fuller
Pat Galligan, Elisa Galuppi, Julia Grant, Pippa Green,
Christine Haines, Adeline Han, Daniel Hawkins,
Anke Held, Valerie Hess, James Hyslop,
Helena Ingham, Wei-Ting Jud, Quardya Kebir,
Guady Kelly, Amy Kent, Imogen Kerr, Hala Khayat,
Alexandra Kindermann, Julia Kiss, Polly Knewstubb,
Aoife Leach, Rob Leatham, Antoine Leboutellier,
Stephanie Manstein, Amparo Martinez Rusotto,
Tancredi Massimo di Roccasecca, Georgie Mawby,
David McLachlan, Lynda McLeod, Melinda Melrose,
Kateryna Merkalenko, Toby Monk, Rosie O'Connor,
Christopher Petre, Antonia Pitt, Eugene Pooley,
Sarah Rancans, Sarah Reynolds, Meghan Russell,
Pat Savage, Julie Schutz, Hannah Schweiger,
Angus Scott, Charles Scott, Valeria Severini,
Ben Slinger, James Smith, Graham Smithson,
Annelies Stevens, Charlotte Stewart, Iain Tarling,
Sarah Tennant, Marie-Claire Turkington,
Flora Turnbull, Mieke Van Embden,
Shanthi Veigas, Julie Vial, Assunta Grafín von Moy,
Anastasia von Seibold, Tony Walshe, Annette Wilson,
Julian Wilson, Miriam Winson-Alio, Elissa Wood,
Suzanne Yalcin-Pennings, Charlotte Young





CHRISTIE'S

8 KING STREET ST. JAMES'S LONDON SW1Y 6QT